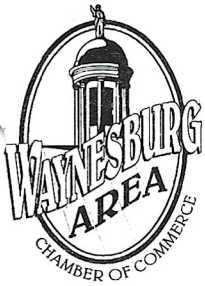


CHAMBER CHATTER

The Newsletter of the Waynesburg Area Chamber of Commerce
 Phone: (724) 627-5926 • Fax: (724) 627-8017
 E-mail: wbgchamb@greenepa.net
www.greenepa.net/~wbgchamb



President's Letter

The Celebration of the Vision Statement that was held at the Waynesburg Theater October 10th was a success. There were many new faces in attendance, among the guests was my boss Rep. Bill DeWeese. It was wonderful to see so many dedicated to the revitalization.

The Chamber held a membership drive the week of October 15th we acquired 13 new members. We welcome them and hope to see them at the general membership meeting November 28th at the Greene County Vo-Tech School.

The annual membership banquet was held last Saturday November 10th at the Waynesburg Elks. We had a great turn out 150 in all. We presented the 2001 Distinguished Service award to Audrey Greenlee; we also had some 20-year plaque recipients. A special plaque was given to Chad Moore for his many years of service to the Chamber. Chad was transferred to Washington to manage the new First Federal facility. We will miss him and wish him the best of luck. If you missed the banquet you really missed a great time. I would like to thank Melody and the committee for all their hard work for this event.

Again it is time for the Christmas bulbs! This year we have the final bulb in the 5 bulb series; the 2001 bulb is the original Greene County Courthouse. We are running a special one set of all 5 bulbs for \$20.00. If you want to purchase any of the other bulbs separately they are \$5.00 each. Give Melody a call 724-627-5926 to order your set. **Remember they make great Christmas Gifts!**

Susan W. Stoy, President

CHAMBER AWARDS THE 2001 DISTINGUISHED SERVICE AWARD TO AUDREY GREENLEE

A Waynesburg woman whose name has become synonymous with volunteerism has been chosen as the Waynesburg Area Chamber of Commerce's 2001 Distinguished Service Award recipient.



Audrey Greenlee was honored at the chamber's annual membership banquet Nov. 10 at Waynesburg Elks Club.

When the Waynesburg Senior Citizen Center opened in 1972, Greenlee stepped forward from the very beginning and delivered meals at least once a week and sometimes twice a week.

For 28 years, she delivered meals to shut-ins every Thursday and often took along her husband, Dr. D. Paul Greenlee.

Greenlee also delivered books for Bowlby Public Library. She volunteered her services to shut-ins for many years until the library obtained a van to deliver books in the area.

She also was an active volunteer at Greene County Memorial Hospital for 15 years.

At various times, the Greenlees had foreign exchange students in their home. Cur-

rently, she and her husband have two grandchildren staying with them so they can attend Waynesburg Central High School

The Greenlees have nine children, six girls and three boys. They also had three foster children at various times in their lives.

Today, Greenlee's volunteer hours are much different than in the past. She sits by her telephone talking to the many shut-ins she used to deliver meals to. Heart problems and certain medications have resulted in the loss of much of her eyesight

Carolyn Morris, site supervisor at Waynesburg Senior Center, who submitted Greenlee's name for consideration for the award, said, "We continue to list her hours as a volunteer here at the Waynesburg Senior Center."

Greenlee was chosen from a field of nominees submitted by local residents. The award is based on contribution to community welfare and betterment; participation in all-around community activities and civic enterprises; evidence of lasting contributions to community welfare; evidence of leadership ability; success in one's own vocation and personal and business progress; and cooperation with individuals and organizations. The award has no relation to work performed for the chamber.

Annual Christmas Parade

The annual Christmas Parade will be held on Saturday, December 1st beginning at 2:00 p.m. Applications for units for the parade are currently available. If you did not receive one by mail and would like to enter a unit, please call the Chamber office. There will be a float competition with cash awards going to the first three places with three honorable mentions also being awarded. Please plan on participating! If you would like to join the committee to help line up the parade, please let us know. Volunteers are greatly appreciated!!!!

★ ★ ★ ★ ★ ★ ★ ★ ★ ★
GENERAL MEMBERSHIP MEETING
 ★ ★ ★ ★ ★ ★ ★ ★ ★ ★

NOVEMBER 24, 2001
Noon to 1:00 p.m. • Greene County Vo-Tech

***Election for new Board Members will take place at this meeting.
 Networking Opportunity - Bring Your Business Cards*

ANNUAL MEMBERSHIP DRIVE WELCOMES NEW MEMBERS

New Members - October 2001

Dr. Roy C. Harmon, D.P.M.

55 West High Street
Represented by Jeanne Burns
724-627-5090
Physician

Diva's Delicacies

Lori Blaker
66 East High Street
724-627-7900
Unique gifts and collectibles

Morris Signs and Graphics

Kevin Morris
256 West Franklin Street
724-627-5291
email-morrisignco@alltel.net
Signs and Graphics

Affordable Comfort

Helen Perrine
32 Church Street
724-627-5200
fax 724-627-5226
email-hperrine@affordablecomfort.org
web site-www.affordablecomfort.org
Non-Profit

Waynesburg Sewing Center

Betty Crumrine Waychoff
30 South Morris Street
724-627-3838
Alterations & Tuxedo Rentals

King's Car Wash

Kathy Cooke
1000 East Greene Street
724-627-9975
email-cooke_kingscarwash@hotmail.com
Car Detail and Car Wash

Memory Medallion, Inc.

Glenn Toothman
61 North Richhill Street
724-627-8841
fax 724-627-3472
email-glenn@memorymedallion.com
web site-www.memorymedallion.com
Technology Based Information Service

Hudson's Jewelers

Karen Kidkadden
17 West High Street
724-627-5151
Retail Jewelry Store

Jan's Country Nook

Janet McGhie
56 East High Street
724-627-7546
email-antique@greenepa.net
Antiques and Collectibles

Roberts Orthotics & Prosthetics

Jeffrey Roberts
107 East Roy Furman Highway, Suite 104
724-627-4600
fax 724-627-4606
Orthotics & Prosthetics

Ross Beauty Shop

Jean Ross
75 South Woodland Avenue
724-627-6809
email-lilyk@greenepa.net
Beauty Shop

Back-In-Action Chiropractic

Dr. Philip Woods
226 Bill George Drive
724-852-1624
fax 724-852-1592
email-movementislife@yahoo.com
Chiropractic Office

Hoyle's Graphic Xpressions

James and Theresa Hoyle
440 Main Street
Clarksville, Pa 15322
724-377-0161
fax 724-377-0162
email-graphic_xpressions@yahoo.com
web site -
www.hoylesgraphicxpressions.com
Screen Printing, embroidery, vinyl
lettering, engraving

Nominees For Board of Directors

The following members have accepted a nomination for the 2001-2004 Board of Directors term. Five will be elected at the November General Membership Meeting and will take office in January. Nominations will also be accepted from the floor prior to the election.

If you would like to cast a vote for the Board of Directors elections and know you can not make the meeting, you may vote by submitting your choice to the Chamber office in a sealed envelope with your signature across the seal prior to the November 28th General Membership Meeting.

Sheila Barger – Promistar Bank
Cathy Cross – Cross Flowers
Louise Gapen – Merle Norman
Cosmetics and Gifts
Kathleen Gregg – Greene County
School to Work
Carol Howard – Howard Excavating
Ginny McClelland – Ginny McClelland
Dance Studio
Mary Pruss – Peacock, Keller, Ecker &
Crothers, L.L.P.
Ross Smith – Child Care Information
Service of Greene County
Shirley Stockdale – Clerk of Courts
Ellen Stuck - Jacobs Petroleum
Dolly Throckmorton – Waynesburg
Giant Eagle
Bruce Wermlinger – Waynesburg Borough

The Mechanics of Starting A Small Business

December 13, 2001

8:00 a.m. to 10:00 a.m.

Fort Jackson Building
Mezzanine Level - Suite 150

19 S. Washington Street, Waynesburg, PA

The Mechanics of Starting a Small Business workshop will give you the vital "nuts and bolts" for establishing your business. Learn details about the legal and tax requirements involved as well as how to secure start-up capital. An informational packet will also be provided. Start on the correct path by learning how to:

- Identify the unique lifestyle requirements involved in owning a small business
- Assess the feasibility of your business idea
- Develop a Business Plan
- Obtain financing
- Market your product or service
- Identify the steps to follow to help you start your business
- Identify other resources that help you plan to succeed

This free seminar will be held from 8:00 to 10:00 am and will include a question/answer period during the final hour. Please call (724) 627-9259 or (724) 627-9054 to make a reservation.

Diabetes Classes

Greene County Memorial Hospital

December 4, 6, 11 & 13
9:00 a.m. to 12:00 noon

*Learn How to Live
Well with Diabetes*

Call for more information
724-627-2645

*An ounce of prevention is
worth a pound of cure.*

WELCOME NEW REPRESENTATIVES

Toni Rhoderick – Cellular One

Food For Thought

"The great thing in this world is not so much where you stand, as in what direction you are moving."

–Oliver Wendell Holmes, Jr.

Annual Membership Meeting and Banquet A BIG SUCCESS



The Annual Membership Meeting and Banquet for Chamber members was held on Saturday evening, November 10th at the Waynesburg Elks. The evening saw great food, fellowship and fun. The following members were recognized for years of dedicated membership:

- Over 20 year plaques were awarded to:
RE-MAX Integrity First
Steinberg Vision Associates
Waynesburg Moose Lodge #461
Community Bank
Waynesburg Special Events
Commission

Marking other membership milestones were:

15 Years

Greene A.R.C.
Mountainview Gardens

10 Years

Cole's Log Cabin Bed-n-Breakfast
Interval Chiropractic Center
Linda C. Corfont, C.P.A.
Greene County Messenger
Hospice Care of Washington
Hospital
Chambers and Associates, P.C.
Scott Enterprises
Social Service League of Waynesburg
Trader's Plumbing, Heating &
Air Conditioning
Praful Vora, M.D.P.C.



State Representative
H. William DeWeese
Edward Jones & Company
Janice Flynn State Farm Insurance
Waynesburg Rotary Club
Horseman's Association of
Greene County
Waynesburg Lodge #469 I.O.O.F
Waynesburg Masons Lodge #153

5 Years

Area Agency on Aging
Rush Funeral Home
The Locker Room
Dukate's Lasting Impressions
Communications Development
Company
Tri-State Health Care Association
Cellular One
Cornerstone Genealogical Society
Pat's Discount
Swala's Antiques
Shriver's Landscape & Video Drain
Chad M. Moore, of First Federal Savings & Loan Association was presented with a special service award for outstanding and dedicated service to the Chamber. Chad joined the Board of Directors in the late 1980's and has held almost every office and committee chairmanship possible. He resigned this past spring to take the leadership position at First Federal's new branch in Washington, Pa.

WCCC Sees Enrollment Increase

Westmoreland County Community College has 5,753 students enrolled in credit classes this fall, a 5 percent increase from the fall 2000 semester announced College President Daniel C. Krezenski.

"The increase is across the board in just about every enrollment category - fulltime, part-time, off-campus sites and distance learning," said Krezenski.

WCCC is up 6.8 percent in full-time students. Part-time student enrollment jumped 3.7 percent to total 3,413. "That's the biggest increase we've seen in this group for a few years," said Krezenski.

Krezenski attributes the enrollment boost to the sluggish economy. "Generally, when people are laid-off, they go back to school to improve their current job skills or train for a new career."

Krezenski added that WCCC's increased accessibility also may have contributed to the higher enrollment. Over the last two years, WCCC has established education centers in nearby counties without community colleges - Indiana and Greene - and expanded distance learning offerings, such as online classes and telecourses.

"Now, more than ever before, WCCC classes are closer to home or even in the home with our online classes and telecourses," said Krezenski.

Overall, student enrollment is up at each off-campus site, including the Westmoreland County centers in Belle Vernon, Latrobe, New Kensington and Penn Township. The most significant growth occurred at the Indiana and Greene county locations.

Currently, 183 students are enrolled in 460 classes through the Indiana County center, which comprises five locations. Through the Greene County center, which encompasses six sites, 135 students are currently registered for 293 classes.

Also this fall, about 1,000 students are enrolled in 51 WCCC online classes, the most ever.

Thanks and Congratulations

Frank J. Couch of Greene County Team PA CareerLink was the lucky winner at the October General Membership Meeting. Frank took home a complete set of the Greene County Historical Sites Christmas Bulbs sponsored by the Chamber.

ChamberChoice™
Health Plans for All Business

Take Advantage of Alltel ADSL Service

Members are offered the chance to sign up for high speed Internet service (ADSL) through Alltel. This high speed internet service is on display at the Chamber office and if you'd like to stop by and surf the net for a few minutes, you'll see how much time you can save with this feature. In addition, you no longer need two lines to use your phone and your Internet service at the same time; this one line does both at the same time. For more information or to get a sign-up sheet faxed to you, please call the Chamber office.

Chamber Polo Shirts Available

Green polo shirts with the Chamber logo embroidered in white are now available to members at a cost of \$20 each, \$24 for XXL. Members are encouraged to purchase shirts and wear them proudly to let everyone know that you support your Chamber of Commerce!!! To order shirts, please contact the office.

WCCC Moves Forward with Plans for Emergency Training Center

The Westmoreland County Community College board of trustees, at its meeting Wednesday, October 24, took the next step in plans for constructing an emergency services training facility in South Huntingdon Township.

The board authorized College President Daniel C. Krezenski to negotiate an agreement with State Public School Building Authority for the sale of \$8 million in bonds to cover building costs.

Both the Westmoreland County Commissioners and the Pennsylvania Department of Education have already agreed to equally share in the repayment of the bonds.

The facility, currently being designed by JSA, a Pittsburgh architectural firm hired last month by the board, will be located on a 150-acre tract of land, donated by the county, near a Smithton industrial park. The complex will include a \$2 million burn building and provide training for approximately 8,000 southwestern Pennsylvania fire, police and emergency service personnel.

Several WCCC board members toured a similar emergency services training facility when they attended an Association of Community College Trustees' national conference in San Diego last month.

While impressed with that facility, trustee Gene Ciafre said he's "even more impressed with what we'll have here."

Echoing his colleague's sentiments and referring to the national terrorist attacks, C.H. Kerr said, "This college is poised to make a real contribution to the community in these turbulent times with this facility. Our country is going to need trained emergency services workers."

Also in financial affairs, the board approved the purchase of equipment that will enhance two academic programs.

Fifty microcomputers, related equipment and installation service were bought from Dell Marketing for \$67,748. The computers will upgrade the Office Administration program classrooms.

For the Computer Technology program, 12 Cisco switches were bought for \$56,698.17 from Verizon.

Both purchases will be totally funded by the federal Carl Perkins Grant.

Twelve laser printers and related equipment were purchased for administrative offices from EPLUS for \$19,278.12.

In personnel matters, the board ratified the appointment of Tinamarie A. Trucco of Meadville as coordinator of the Career Prep Project. Trucco has served as the School-to-Work Specialist for the Crawford County Local Partnership in Meadville for the last three years. Prior to that she was a teacher and technology consultant for the Rochester Area School District in Rochester.



Our booth at the Arts in the Park Festival at Ryerson Station State Park in September. We have had a presence at most of the festivals and craft shows in the area this fall in an attempt to market the Christmas Bulb sets and we have several more dates on the calendar. They make great Christmas gifts!!!

DOCUMENT DESTRUCTION –

Who's reading your confidential material?

Greene ARC presented it's newest service of Document Destruction to solve your problems of confidentiality. Are you paying too much to have your confidential records destroyed? Are you concerned that others may get a hold of your confidential materials? Are you having trouble with enough storage space for those old records? Greene ARC offers convenient material drop-off from 8:00 a.m. - 4:00 p.m. at their Ruff Creek location. Extended hours are available upon request. The offer monthly invoicing. Low cost weekly or monthly pickups at your place of business are also available. Immediate shredding of confidential material for only pennies per pound and proof that your documents were destroyed. This is ideal for banks, insurance companies, hospitals, schools and any business that handles confidential materials. They are fully insured, bonded to \$1 million and your business created employment opportunities for persons with disabilities. For more information please call 724-852-3062.

Articles For Publication

We always welcome your news articles and press releases concerning your business. Please submit material for the Chamber newsletter by the 1st day of each month for the month in which you would like it published. Photos are also encouraged.

Inserts may be placed in the newsletter for a fee of \$65 and advertising rates are also available at \$20.00 per month for a business card size.

For more information or to discuss an article idea or ad, please contact the Chamber office.

MEMBER PROFILE



BELTONE HEARING AID CENTER

Susan Shriver, 1466 East High Street, 724-852-4327, web site-www.beltone.com, 2 employees, 54 years in business.

With over 50 years experience, Beltone is the largest U.S. and Canadian manufacturer of hearing instruments and audiological test equipment. Their products are available only through authorized Beltone Hearing Aid Centers. So you can expect friendly service from professional people who care and continue learning in the most extensive training program in the industry. Since no two hearing losses are alike, each one is programmed into Beltone's computer system. This system, called SelectaFit, calculates exact hearing aid specifications from more than three million possible combinations. The hearing instrument is then engineered with advanced microcircuits using 24 caret gold contacts for superior sound quality and custom molded for a perfect fit to the contours of the ear. Quality is their top priority. Each hearing instrument passes 48 separate quality checks in production before final inspection by Certifax, their exclusive computerized quality control system. What once started as a small business in Uniontown over 50 years ago, has now grown to cover a total of 22 counties in Maryland, West Virginia and Pennsylvania. Yet, 50 years and three generations later the Phillis family and their office staff have one very important thing in mind . . . Help People Hear Better!!!

Greene County



GREENE COUNTY UNITED WAY

Amy Widdup, Executive Director, 748 East High Street, 724-852-1009, email-unitedway@alltel.net, 2 employees, 21 years in business.

The United Way is a voluntary program developed to raise funds and then allocate these funds effectively to human service agencies. The Greene County United Way was established in 1979 and currently has 14 member agencies. In 2000, these agencies provided services to 37% of Greene County. In 2000, the United Way campaign volunteers raised nearly \$250,000.

MEMBERSHIP BENEFITS

The Waynesburg Area Chamber of Commerce will continue its work to improve the area economy and quality of life. However, at the heart of the Chamber's efforts will be a program of benefits and services to its members, which are not available to non-members.

M/A GENERAL MEMBERSHIP MEETINGS -

Scheduled on the fourth Wednesday of each month, these meetings provide an opportunity to meet with other business and professional people and to be addressed by speakers who will cover topics important to your business and community.

M - Modify by adding Special Purposes/Training meetings to schedule

K/M COMMITTEE MEETINGS - An opportunity to work on major projects for our community and meet and work with other business and professional people with the same interests.

M - Modify by adding a committee sign up sheet to all new member packets and continue the Meeting Blitz in February.

K SPECIAL EVENTS - Events that bring members together with members of the community for both business and pleasure.

K NEWSLETTER - News from and about our members and our work first hand. Listing of new members and members in the news each month. Advertising opportunities available to all members.

M MEMBERSHIP SERVICE DIRECTORY - All members receive free listings in our Membership Service Directory based on services and products offered as well as being listed on our "Web Page" with free links to their sites.

M - Modify by establishing a printed directory to be published and distributed to all members annually.

K ADVERTISING OPPORTUNITIES - Available to members in our monthly newsletter, our city maps, visitors guide, Miss Rain Day program, Annual Banquet program and Membership Directory. (Change Visitors guide to Community Profile)

M REFERRALS - We receive hundreds of requests for recommendations on goods or services provided in our area.....we refer only Chamber members in response to these

requests from newcomers, visitors or residents.

M- Modify by printing a referral notice card that is sent out each time a member is referred by the office.

K GROUP HEALTH INSURANCE - Members are eligible for a Blue Cross/Blue Shield Health Insurance Plan. Optional Dental, Vision, Life and Disability coverage is also available at a very competitive rate.

K ADP PAYROLL PLAN - Members are eligible for a discounted rate when they join the ADP Payroll Plan.

M AN INFORMATION CENTER - General demographics, maps, tourism brochures are distributed through our office which can help promote business and tourism in our area. Even the strangest questions are answered daily by our staff. The Chamber will display and distribute your brochures at no cost to you. (Remove the word Tourism)

M- Modify by creating a clearly defined brochure area in the hallway for our materials.

K A NOTARY SERVICE - All members will receive free notary service. (except for Auto Transfers)

M A MEMBERSHIP PLAQUE - Every member receives a membership plaque to display proudly in your place of business. This plaque says to the buying public that you care about the business climate and quality of life in Waynesburg and Greene County. And that you cared enough to make and INVESTMENT in the area by joining forces with the Waynesburg Area Chamber of Commerce to help make Waynesburg a better place to live and work.

M- Modify by considering changing the member plaques when the current supply is depleted to include our logo on the actual plaque. Present all current members with a new plaque.

A SHORT TERM/LONG TERM DISABILITY AND SPECIALIZED INSURANCE - Will be offered soon by Chamber of Commerce Service Corp.

A 401 K PARTICIPATION PLAN - Will be offered soon by Chamber of Commerce Service Corp.

A. SPONSORSHIP OPPORTUNITIES - Offer sponsorship opportunities at all Chamber events and in all Chamber publications.

A MEMBER TO MEMBER DISCOUNT PROGRAM - Cards would be issued to each member that

would entitle them to discounts and free services from other participating members.

A **GIFT CERTIFICATE PROGRAM** - Follow Model from Titusville

COMMITTEE DESCRIPTIONS

K **LONG RANGE PLANNING** - Will concentrate on planning the direction of the Waynesburg Area Chamber of Commerce over the next five years. Will develop practices and policies for operating that are needed as the Chamber continues to experience growth.

K **BY-LAWS, POLICIES AND PROCEDURES** - Will follow the everyday operation of the organization and propose By-Law, Polices or Procedure changes from time to time for final approval by the Membership.

K/M **MEMBERSHIP** - Will continue to focus on the needs of the member and investigate ways to offer more to members. Will organize and operate the annual membership drive and business after hours.

M - Modify by offering business building services, providing networking opportunities and educational seminars to members. This committee will work in conjunction with the Annual Banquet Committee.

K/A **GOLF OUTING** - Will operate the annual members golf outing which provides members with an opportunity to network and enjoy a day of fellowship and prizes.

A - Add a plan of continued growth.

K/M/E **MISS RAIN DAY SCHOLARSHIP PAGEANT** - Will continue to provide scholarships to Greene County youth through a program of personal development, competition and community service.

M - Modify with the condition that the four concerns outlined by the Executive Board are adequately addressed before the 2002 pageant date.

1. Relationship between staff and chair
2. Justify staff time spent
3. Tighter budgeting process
4. How to make it help promote member business

E - If these issues are not resolved, the pageant could be eliminated from the Chamber Program of Work.

K/M **RAIN DAY BOOTH** - Will take part in the community's annual Rain Day Festival by providing entertainment through an old fashioned dunking booth. And in conjunction with the Waynesburg Borough Special Events

Commission, will spread the word nationwide of the tradition of Rain Day in Waynesburg.

M - If the Miss Rain Day Pageant is eliminated from the Program of Work, the focus of our Rain Day Booth could change.

K/M **DISTINGUISHED SERVICE AWARD** - Will honor one individual annually for the outstanding service, dedication and commitment to the Waynesburg Area. The award will be conferred for direct service to the community and has no relation to work performed for the Waynesburg Area Chamber of Commerce.

M - Modify by reviewing the frequency of award as well as opportunity to consider a candidate without a formal nomination.

K/M **ANNUAL MEMBERSHIP BANQUET** - Will provide members with an evening of good food and fellowship with other Chamber members. Will honor twenty-five year members and the Distinguished Service Award Winner.

M - Modify by working diligently to increase the attendance and perception of the event.

K **EDUCATIONAL FUND SCHOLARSHIP** - Will provide an annual scholarship to a deserving Greene County student to pursue higher education. The scholarship is based on a minimum of a 3.0 grade point average, a written essay and listing of community and school involvement.

M **DOWNTOWN REVITALIZATION** - Will oversee the solicitation of grants and donations to begin the process of formulating and Downtown Revitalization plan and the implementation of this plan.

M - Modify by incorporating "Waynesburg Prosperous & Beautiful" to operate the Main Street Program independently from, but with the backing of the Chamber.

K **SPEAKERS** - Will provide speakers for the General Membership Meeting and other special events.

K **CHRISTMAS PARADE** - Will continue the Holiday tradition of good will and entertainment. The Distinguished Service Award winner and Miss Rain Day will serve as Grand Marshals to lead the parade. There are approximately 100-125 units featuring floats, bands and unusual entries from throughout Greene County and of course, Santa and Mrs. Claus.

THE DOWNTOWN REVITALIZATION COMMITTEE OF THE WAYNESBURG AREA CHAMBER OF COMMERCE

Concluding Celebration of the Vision Process by Main Street U.S.A.

Thank you to everyone involved who made this evening a success!

Waynesburg College
RAG American Coal
Waynesburg Theater
Representative H. William DeWeese
Timothy R. Thyreen, President,
Waynesburg College

Dave Coder, Chairman,
Greene County Commissioners
Waynesburg College Lamplighters
Bobby Cowell
Greene County Historical Society
Cornerstone Genealogical Society

Giant Eagle
John Owen Catering
Charles Perrine
Chris Kiger
Cross Flowers
Modars Cake and Candy Supplies



The Steering Committee learning what tasks lie ahead of them.



Bill Fontana, Director of the Pennsylvania Downtown Center, addressing the crowd.



Attendees enjoying the good food prepared by John Owen.

ANNUAL CHRISTMAS BULB SALE – THEY ARE GOING FAST

2001 Edition - Fifth and **Final** in the Series

Features the original log Greene County Courthouse currently under restoration

2000 Edition - Fourth in the Series

Features the Greene County Historical Society Honoring their 75th anniversary

1999 Edition - Third in the Series

Features Waynesburg College - Miller Hall Honoring their 150th anniversary

1998 Edition - Second in the Series

Features Carmichaels Covered Bridge

1997 Edition - First in the Series

Features the Greene County Courthouse

All bulbs are maroon with white printing and come in a protective package

ORDER FORM

Name: _____ Phone: _____

Address: _____

_____ **SPECIAL COLLECTION PRICE-** \$20 All five in the series for the price of four

_____ 2001 Edition at \$5.00 each

_____ 2000 Edition at \$5.00 each

_____ 1999 Edition at \$5.00 each

_____ 1998 Edition at \$5.00 each

_____ 1997 Edition at \$5.00 each

SHIPPING

1 bulb - \$3.20

5 bulbs - \$6.40

2 bulbs - \$3.20

6 bulbs - \$6.40

3 bulbs - \$3.20

7 bulbs - \$6.40

4 bulbs - \$3.20

8 bulbs - \$6.40

_____ I will pick up in the Chamber office

_____ Please ship to me

Order Total \$ _____

Shipping \$ _____ if needed

TOTAL \$ _____

Make checks payable to Waynesburg Chamber of Commerce

Susan in Parade



"President Susan Stoy represented the Chamber of Commerce in the Annual Veteran's Day Parade. The community enjoyed a great parade!"

Miss Rain Day Plaque Presentation



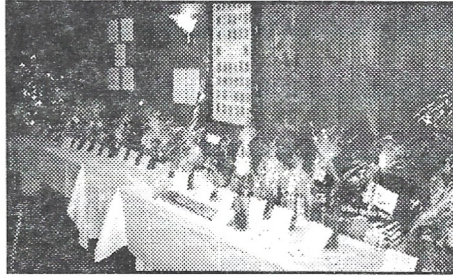
"Miss Rain Day 2001, Angela Bertugli, was recently presented the Miss Rain Day School Plaque that will be displayed in her high school, Jefferson-Morgan, for the coming year. Presenting the plaque to Angela and the Principal of J-M, Tom Katruska, is Pageant Committee members, Pamela Bogucki and Jeanine Henry."

Award Presented



"Audrey Greenlee, the 2001 Distinguished Service Award Winner is presented with her awards by Chamber President, Susan Stoy, and Miss Rain Day 2001, Angela Bertugli."

CHINESE AUCTION A BIG HIT



The Educational Scholarship Fund Committee held a Chinese Auction at the annual Membership Banquet. The event raised \$500 for the fund which awards \$1,500 annually to a Greene County High School senior. The committee would like to thank the following businesses for contributing the wonderful prizes that were given away at the banquet.

Aunt Cindy's Gift Shop
 Carol Lee Shop
 Clips and Tips
 Community Bank
 Congressman Frank Mascara
 Creative Memories
 Cross Flowers
 Fashion Shop
 First Federal Savings & Loan
 Greene County Memorial Hospital
 Kyowa America Corporation
 Lewis Limousine Service
 McDonalds
 Merle Norman Cosmetics and Gifts
 Mickey's Men's Store
 Nail Policz
 Pizza Hut
 RAG American Coal
 Representative H. William DeWeese
 Rohanna's Golf Course
 Southside Deli
 Special Events Commission
 Spherion
 Subway
 Video 99
 Waddel & Reed
 Waynesburg College
 Waynesburg Fire Department
 Waynesburg Theater
 Wendy's Old Fashioned Hamburgers

Greene County Historical Society Christmas Open House

at the
Museum

November 30 &
December 1 & 2, 2001

Weekends 12-4 - Friday 5-8 p.m.

View the festively decorated front rooms of the Museum, have some refreshments and do some shopping in the

Museum Gift Shop

where you can find many unique items and History books

FREE Admission

Museum is located at
 918 Rolling Meadows Rd.
 3 mis. East of Waynesburg, PA
 724-627-3204

Long Range Planning Committee Presents A New List of Committees and Member Benefits

The Long Range Planning Committee of the Chamber has been working since mid-summer on the review and update of the Chamber's Program of Work. The new Mission Statement was adopted by the membership and used as a guide for reviewing the Benefits and Committees. Enclosed in this newsletter you will find a list of those items. Each item was reviewed and assigned a K, for keep, M for modify, E for eliminate and an A, for add. Each modification is outlined below each item. This information will be presented at the November General Membership meeting where a vote will be taken to adopt these updates into our Program of Work. When the new Board of Directors take their positions, this will be the guide for their work over the next 12 months.

Village Profile
Community Profile Network

IT'S HERE!!!!

The Waynesburg Area Quality of Life book that has been a year and a half long project is finally here and ready to be distributed. In the few days since it's arrival, the office has received many positive comments about the publication. They are available in the Chamber office and all advertisers will receive copies directly from Village Profile. They will be distributed to the Kirby Welcome Center, the mortgage departments of our local banks and realtors who routinely deal with new and prospective residents. The Chamber office will distribute them as part of the relocation package which details our area. If you would like to receive copies of the publication, please contact the office.

**Greene County
Memorial Hospital**

presents

Diabetic Eye Disease

Presented by Mark Mayle, M.D. of
Regional Eye Associates of Waynesburg

November 27th, 2001 at 6:00 p.m.

in the

Guesman Education Room

2nd floor

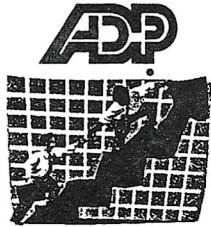
Greene County Memorial Hospital

To register or for more information please call 724-627-2645

Static window decals available to members.
Call the office if you are interested.



PartnerPerspectives



**IS YOUR BUSINESS
GROWING?**

AS A CHAMBER MEMBER YOU
RECEIVE A 15% DISCOUNT ON
NEW PAYROLL SERVICES

1-800-377-3539

P R O M I S T A R

BANK

WAYNESBURG OFFICE

1 West High St.

Waynesburg, PA

Sheila Barger, Manager

Ph.# 724-627-6126

Fax# 724-627-6645



801 East Greene Street
Waynesburg, PA 15370

627-5399

cb Community Bank

A century of service to our communities

TELEPHONE BANKING 1-888-223-8099 or 724-966-8286

Carmichaels 724-966-5041	Greene Plaza 724-627-3134	McMurray 724-941-9030	Washington 724-225-5300	Washington Mall 724-225-4797
------------------------------------	-------------------------------------	---------------------------------	-----------------------------------	--

Claysville 724-663-7723	Greensboro 724-943-3581	Pioneer 724-499-5136	Waynesburg 724-852-1715	Southpointe 724-743-0700
-----------------------------------	-----------------------------------	--------------------------------	-----------------------------------	------------------------------------



www.communitybank.tv

Member FDIC

Bell's Wholesale Grocery, Inc.
"Ring Bell's for Service"

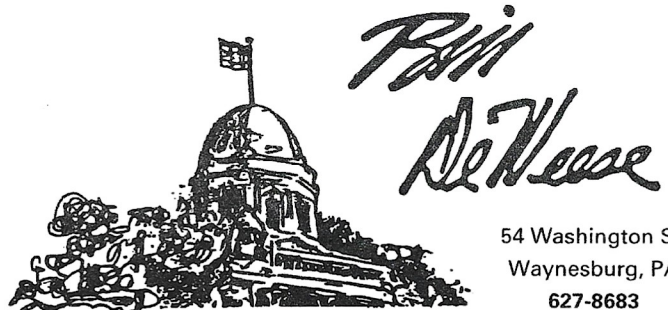
Full Line Distributor Serving Greene County
In Retail and Food Service For 40 Years!

*Deli • Meat • Bakery • Grocery • HBL
Frozen Food • Tobacco • Dairy • Produce*

211 Meadow Ridge Drive
Mt. Morris, PA 15349

1-800-288-2565

We're Here To Help You . . .



54 Washington St.
Waynesburg, PA
627-8683



More than just Internet access...
We are your local Internet experts.

GreenePA

852-2599

<http://www.greenepa.net/>

GreenePA is a service of
Within Technology, Inc.

Fast 56K Dial-ins
Faster ISDN Dial-ins
Digital Modems
Business Accounts
Web Hosting

First Federal
savings and loan association
of GREENE COUNTY

FDIC



TELEPHONE BANKING

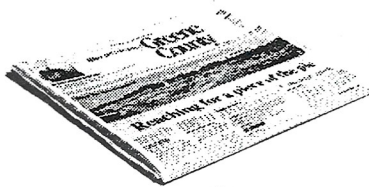
627-4291 or 1-877-GREENE CO (1-877-473-3632)

HOME OFFICE: 25 East High Street • PO Box 1901 • Waynesburg, PA 15370 • (724) 627-6116
FAYETTE OFFICE: Main & Beeson • PO Box 1246 • Uniontown, PA 15401 • (724) 437-2861
CARMICHAELS OFFICE: 101 West George Street • PO Box 397 • Carmichaels, PA 15320 • (724) 966-5053
WAYNESBURG DRIVE-THRU: Intersection of Routes 19 & 21 • Waynesburg, PA 15370 • (724) 852-2203
UNIONTOWN DRIVE-THRU: McClellandtown Road • Uniontown, PA 15401 • (724) 430-2889

www.firstfederalofgreene.com

**Your Number
One Source
For News And
Information In
Greene County
7 Days A Week.**

*Serving Greene County
for more than 90 years.*



Observer-Reporter

32 Church St., Waynesburg, PA 15370
www.observer-reporter.com
E-mail: orgmco@observer-reporter.com
(724) 852-2602 or 1-800-222-6397 Ext. 3356 or 3357

ALLTEL Helps Your Community Stay In Touch

ALLTEL takes pride in community involvement, from the telecommunications services we offer, to our community volunteer efforts.

As community volunteers for school programs, we introduce the younger generation to the wonders of the phone. At local events we educate the public on what lies beyond those phone lines.

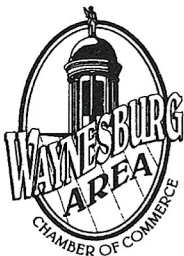
But our efforts don't stop there. We continuously update our equipment to keep in step with growth and development in your community.

For all your community's needs, we're there, keeping your lines of communication open and more.



HELP US KEEP OUR MAILING LIST CORRECT

If there is a mistake on your mailing label or the person whose name appears on the label is no longer with your company, please drop us a note or give us a call. We'll correct it right away.



**WAYNESBURG AREA
CHAMBER OF COMMERCE**

19 South Washington Street
Suite 100

Waynesburg, PA 15370

Phone: (724) 627-5926

Fax: (724) 627-8017

E-mail: wbgchamb@greenepa.net

www.greenepa.net/~wbgchamb

PRE SORT STANDARD

U.S. POSTAGE

PAID

Waynesburg, PA

Permit No. 18

*Please be sure to share this
newsletter with others in
your place of business.*

