

# CHAMBER CHATTER

The Newsletter of the Waynesburg Area Chamber of Commerce  
Phone: (724) 627-5926 • Fax: (724) 627-8017  
E-mail: wbgchamb@greenepa.net  
www.waynesburgchamber.com

To provide services and programs that will increase the success of member businesses and organizations and enhance the economy and quality of life in the Waynesburg Area. To remain a politically unbiased and enthusiastic resource to our members and the community at large.

## Welcome New Members

### EWD Consulting

Mr. Edward W. DeBolt, Owner  
1115 Crucible Road  
Rices Landing, Pa. 15357  
724-364-3110 phone & fax  
Email: ewdconsulting@atlanticbb.net  
Web: ewdconsulting.net  
Computer – Web – Photography  
1 employee  
Referred by Massage by Caroline  
Caroline Carter

### Fairall United Methodist Church

583 White Barn Road  
Mrs. Carolyn Morris  
Chair-Administrative Council  
542 Pitcock Run Road,  
Waynesburg, Pa. 15370  
724-627-9459  
Church  
3 employees

## Correction

The phone number for Massage by Caroline was incorrectly listed in last month's newsletter. The correct number is 412-977-1495.

## New Websites

The following members have new websites. Stop by and check them out.

### Rolling Meadows Nursing & Rehabilitation

www.rollingmeadowsnursing.com

### First Assembly of God

www.waynesburgfirstag.org

**ChamberChoice**  
Health Plans for All Business

*Treat your Administrative Assistants to the Waynesburg Area Chamber of Commerce's 3rd Annual celebration in honor of Administrative Professional's Day Luncheon (Secretary's Day)*

*Friday, April 27th, 2007  
Noon to 1:30pm  
Rohanna's Restaurant*

*A sit down lunch will be served consisting of:  
Chicken Salad Croissant,  
Cup of Soup,  
Fresh Fruit and Sherbet*

*Our featured speaker will be:  
Autumn Marisa  
Miss Pennsylvania 2002*

*Chinese Auction • Door Prizes •  
50/50 Drawing • Shopping*

*Individuals @ \$ 20 each  
Tables of 8 @ \$ 160 each*

*R.S.V.P. by April 25th, 2007  
Call to reserve your seats - 724-627-5926  
Seating is limited to the  
first 150 Reservations*

## \$2,500 Scholarship Application Deadline Approaching

The Waynesburg Area Chamber of Commerce is reminding area seniors that the application deadline for the 17th Annual Chamber Scholarship in the amount of \$2,500 is 4:00pm on Wednesday, April 18th, 2007. This is the 17th year that the Chamber has awarded the scholarship. The scholarship program is open to any Greene County student who will be a graduating senior in 2007. The Chamber urged all high school seniors who have been accepted to a College or Technical School as an incoming freshman this Fall and have maintained a cumulative grade point average of 3.0 or better while in high school to apply for this scholarship. Applicants will be required to furnish a listing of their school activities and local community involvement and must write an essay on "How do you plan to use your education to make a difference in your life and your community?" Applications are available in the Chamber office at 60 West High Street and at each County High School as well as the Greene County Vo-Tech. Applications can also be obtained by calling the Chamber at 724 627-5926 or by visiting the website at www.waynesburgchamber.com Completed applications must be submitted by 4:00pm on Wednesday, April 18th. The winner will be announced May 14th.

## Welcome New Representatives

Greg Rice  
University of Pittsburgh Small  
Business Development Center

## On the Move

Pennsylvania Chiropractic and Rehab Center has moved to 1159 Sixth Street in Waynesburg.

Mail, Boxes & More South has moved to 230 Bill George Drive in Waynesburg.

**WE HAVE MOVED!**



# EXPERIENCED AND ADVANCED EYE CARE

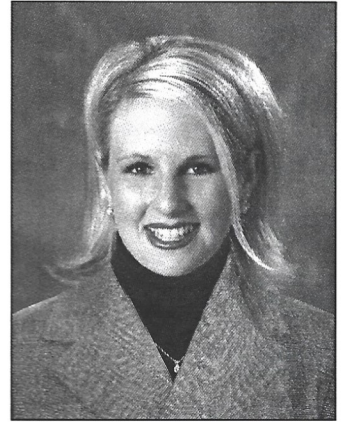
We are pleased to announce that we have moved our Waynesburg office to better serve our valued patients. Our new office offers more room and ample free parking.

## SERVICES OFFERED AT OUR NEW WAYNESBURG OFFICE

**Cataract Evaluation  
Diabetic Retinopathy  
Macular Degeneration  
Glaucoma**

## SERVICES OFFERED AT OUR MEDICAL PRACTICE & COMPREHENSIVE SURGERY CENTER LOCATED IN WASHINGTON, PA

**NEW MICROINCISION CATARACT SURGERY  
ReSTOR® Lens Implant Available • Oculoplastic Surgery  
LASIK Surgery • Vitreoretinal Surgery**



JENNIFER SALVITTI DAVIS, M.D.



**SOUTHWESTERN PENNSYLVANIA EYE CENTER**  
*"committed to excellence in eye care"*

**OUR NEW ADDRESS**

**GREENE COUNTY MEDICAL PLAZA • SUITE 103  
343 EAST ROY FURMAN HIGHWAY • WAYNESBURG, PA 15370  
724-627-5383 • www.swpaeyecenter.com**

## Members in the Spotlight



Southwest Regional Medical Center is a 74 bed hospital with inpatient services ranging from acute care to intensive care. Southwest Regional Medical Center provides 24 hour emergency services, digital diagnostic imaging, convenient laboratory hours, physical therapy, cardiology and behavioral health services. A comprehensive general surgery program is also available. Founded in 1907, the hospital has a rich tradition as the sole acute care hospital in Greene County.

### GREENE ARC

Greene Arc, is a non-profit corporation providing residential, vocational and day support services to citizens with disabilities of Greene and surrounding counties. Their goal is to promote the independence and employment of individuals with disabilities. Greene Arc was established approximately forty years ago. They currently employ 6-65 staff and serve fifty-four individuals in their day programming. For more information, contact Cynthia L. Dias at 724-627-5511 extension 101.



### PENN COMMERCIAL

The growth of Penn Commercial's curriculum and enrollment significantly advanced with a strategic relocation six years ago. Founded in 1929, Penn Commercial was originally headquartered in the center of downtown Washington. In 1969 the Washington Institute of Technology was founded as part of the school. In 2001, the school moved in to Oak Spring Plaza, converting a 65,000 square foot parcel into Penn Commercial's current campus. Enrollment has more than doubled since moving to the South Strabane Township site. Classified as an "Honor Roll" institution by the Accrediting Council for Independent Colleges and Schools (ACICS), Penn Commercial offers 18 diploma and associate degree programs varying in length from 12-18 months. Other amenities include free parking, modern classrooms and a licensed day-care, catering to students from the entire tri-state area.



Studio R has been in existence since 1992. The original location downtown (Hillcrest Shoppes) carried a large selection of art supplies and art, craft art and fine art done by the owner Carol L. Randolph. Many painting classes were held there. When that location closed, Randolph taught painting in Carmichaels and for the McMurray Art League and continues painting in her studio. The artist has won awards in oils and Chinese brush painting in juried art shows. She paints landscapes, portraits and many other subjects in fine art and paints saws, shovels, slates, etc., as well. She also paints silk scarves and produces a large number of note cards with prints of her painting, line drawings, block and nature prints. There is always an open house held at Studio R the first weekend in October. Her work can be seen at [www.MYSTUDIOR.com](http://www.MYSTUDIOR.com). She can be reached at 724-852-6363 or mailed at [MYSTUDIOR@alltel.net](mailto:MYSTUDIOR@alltel.net)

## Mark Your Calendar

Below is a list of major Chamber dates for 2007. Be sure to include the dates on your calendar now.

May 4	Annual Golf Outing Rohanna's Golf Course
May 18	Career Day at Waynesburg Central Elementary School
May 23	2nd Quarter General Membership Breakfast 8:30am - Greene Arc Presentation of 2007 Scholarship
November 17	Annual Membership Banquet Waynesburg College Dining Hall
December 1	Annual Christmas Parade - 2 p.m.

## April Meetings and Events

### April

- 17th – Administrative Professional's Day  
Committee - Noon - Chamber
- 18th – Scholarship Deadline  
4:00 p.m. - Chamber Office
- 19th – Golf Outing Committee  
8am - Airport Restaurant
- 20th – Business Expo Committee  
Noon - RJ Lee Group
- 27th – Administrative Professional's  
Luncheon - Noon - Rohanna's

## Chamber Members Can Save Up To 25% With DHL Express

As a member of Chamber Choice, Waynesburg Chamber members can take advantage of the DHL Partner Savings Program. You are eligible to receive discounts of up to 25% off standard rates on DHL's full suite of shipping services. As the world's largest express and logistics provider, DHL's product portfolio addresses any business need with Next Day, 2nd Day, Ground and International services. One phone call to 1-800-MEMBERS can help you save on all your shipping needs. Send three shipments by 4/30/07 and receive a \$25 savings certificate for your DHL Express invoice. Call 1-800-MEMBERS or visit [www.1800MEMBERS.com/ccsc](http://www.1800MEMBERS.com/ccsc). BE SURE TO IDENTIFY YOUR CHAMBER. Special rules apply. \$25 savings certificate offer is available to new DHL customers only, and only for accounts established under the DHL Partner Savings Program. Three shipments must be sent on the account by 4/30/07. Upon billing for third shipment, a \$25 certificate will be provided. Please allow 6 to 8 weeks for \$25 certificate to arrive. The \$25 certificate must be submitted with an invoice for credit, see certificate for details.

## Member To Member Discount Program

If you have paid your 2007 membership dues you have or will soon receive your 2007 Membership cards for you and your employees. The cards were once again sponsored by H. William DeWeese. Please visit the chamber website at [www.waynesburgchamber.com](http://www.waynesburgchamber.com) to view all of the discounts that are available. Response from the members has been great. There are many good deals available from your fellow chamber members. Be sure to check it out. You can join the program at any time through out the year to offer discounts to your fellow members. Updates are posted to the website monthly so check back often.



**SOUTHWEST  
REGIONAL**  
*Medical Center*  
A New Direction in Health Care

[www.sw-rmc.com](http://www.sw-rmc.com)



*A century of service to our communities*

**TELEPHONE BANKING: 888-223-8099 or 724-966-8286**

**WAYNESBURG OFFICE**  
30 West Greene Street  
724-852-1715

 [www.communitybank.tv](http://www.communitybank.tv) Member FDIC



Dr. Frank Hughes

**Dr. Webb**  
TRI-STATE HEALTH CARE  
*Chiropractors*

20 Miller Lane, Waynesburg, PA 15370

**724-852-2727**

Fax: 724-852-1893

[www.tristatewebb.com](http://www.tristatewebb.com)



*savings and loan association*  
of GREENE COUNTY

**TELEPHONE BANKING**  
**627-4291 or 1-877-GREENE CO (1-877-473-3632)**

HOME OFFICE: 25 East High Street • PO Box 1901 • Waynesburg, PA 15370 • (724) 627-6116  
FAYETTE OFFICE: Main & Beeson • PO Box 1246 • Uniontown, PA 15401 • (724) 437-2861  
CARMICHAELS OFFICE: 101 West George Street • PO Box 397 • Carmichaels, PA 15320 • (724) 966-5053  
WAYNESBURG DRIVE-THRU: Intersection of Routes 19 & 21 • Waynesburg, PA 15370 • (724) 852-2203  
UNIONTOWN DRIVE-THRU: McClellandtown Rd • Uniontown, PA 15401 • (724) 430-2889  
WASHINGTON OFFICE: 460 Washington Rd • Washington, PA 15301 • (724) 228-9005

[www.firstfederalofgreene.com](http://www.firstfederalofgreene.com)

For all your legal needs.  
Mary K. Pruss, Esquire



# Peacock Keller

Legal Services Since 1925

102 East High Street  
Waynesburg, PA 15370

724-627-8331  
peacock@greenepa.net

With other convenient offices in Washington,  
McMurray, Bridgeville, Claysville.  
In PA (800) 242-8897  
www.PeacockKeller.com

# ChamberChoice<sup>SM</sup>

introduces

## Highmark Life & Casualty Group Online Benefits

Benefits include:

- Term Life Insurance
- Short-Term Disability
- Long-Term Disability
- Vision Discounts
- AFLAC

TO GET MORE INFORMATION ON THESE BENEFIT OFFERINGS,  
CALL CHAMBERCHOICE AT  
**1-800-377-3539**



More than just Internet access...  
We are your local Internet experts.

## GreenePA

852-2599

<http://www.greenepa.net/>

GreenePA is a service of  
Within Technology, Inc.

Fast 56K Dial-ins  
Faster ISDN Dial-ins  
Digital Modems  
Business Accounts  
Web Hosting

## EXPERIENCED AND ADVANCED EYE CARE

Cataract Evaluation  
Diabetic Retinopathy  
Macular Degeneration  
Glaucoma



Jennifer Salvitti Davis, M.D.



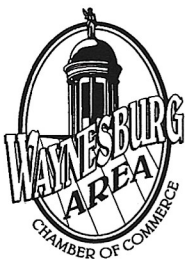
**SOUTHWESTERN PENNSYLVANIA EYE CENTER**  
"committed to excellence in eye care"

Greene County Medical Plaza • Suite 103 • 343 East Roy Furman Highway  
Waynesburg, PA 15370 • 724-627-5383 • [www.swpaeyecenter.com](http://www.swpaeyecenter.com)

SERVICES OFFERED AT OUR MEDICAL PRACTICE & COMPREHENSIVE SURGERY CENTER  
LOCATED AT 750 EAST BEAU ST. IN WASHINGTON, PA:  
NEW MICROINCISION CATARACT SURGERY • Oculoplastic Surgery  
ReStor<sup>®</sup> Lens Implant Available • LASIK Surgery • Vitreoretinal Surgery

## HELP US KEEP OUR MAILING LIST CORRECT

If there is a mistake on your mailing label or the person whose name appears on the label is no longer with your company, please drop us a note or give us a call. We'll correct it right away.



## WAYNESBURG AREA CHAMBER OF COMMERCE

60 West High Street  
Suite 4

Waynesburg, PA 15370

Phone: (724) 627-5926

Fax: (724) 627-8017

E-mail: [wbgchamb@greenepa.net](mailto:wbgchamb@greenepa.net)

[www.waynesburgchamber.com](http://www.waynesburgchamber.com)

PRE SORT STANDARD  
U.S. POSTAGE  
PAID  
Waynesburg, PA  
Permit No. 18

Did you see your name in this issue?  
If not, call the office to find out how  
to be in next month's issue.

Please be sure to share this  
newsletter with others in  
your place of business.