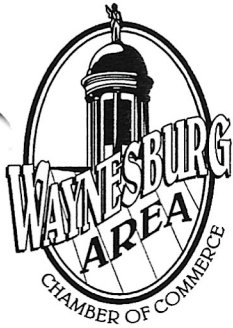


SEPTEMBER 2009



CHAMBER CHATTER

The Newsletter of the Waynesburg Area Chamber of Commerce
Phone: (724) 627-5926 • Fax: (724) 627-8017
E-mail: waynesburgchamber@windstream.net
www.waynesburgchamber.com

To provide services and programs that will increase the success of member businesses and organizations and enhance the economy and quality of life in the Waynesburg Area. To remain a politically unbiased and enthusiastic resource to our members and the community at large.

Come and See How Shopping Locally Can Help You Save Money!

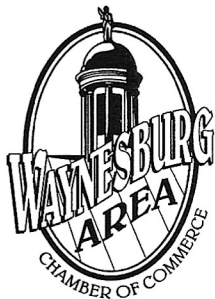
“Saving Green in Greene”




Thursday, Sept. 17, Noon to 6:00 P.M.
First Assembly of God Church, Waynesburg

*A Showcase of Area Businesses • Free Admission & Parking
Prizes & Giveaways*

Sponsored by the Waynesburg Area Chamber of Commerce in partnership with:



Observer-Reporter
Waynesburg University
Community Bank
Ford Business Machines, Inc.

724-705-0444 | www.dpspenn.com 

**For more information call the Waynesburg Area Chamber of Commerce at 724-627-5926.
waynesburgchamber@windstream.net**

New Members

Comcast

Mr. Jack Irwin, Sales Manager
15 Summit Park Drive
Pittsburgh, Pa 15275
412-747-6036
Fax 412-747-6028

Jack_Irwin@cable.comcast.com
Kimberly_Angle@cable.comcast.com
Communications
Cable Provider

Washington County Literacy Council

Mrs. Amy Ross Manko, Executive Director
27 South College Street
Washington, Pa 15301
724-228-6188
Fax 724-228-7966
amy@WCLA4Literacy.org
www.WCLA4Literacy.org

Non-Profit Education Organization
Referred by: Community Foundation of
Greene County

D. Moore & Son Monuments, LLC

Todd Moore, Owner
504 Washington Road
Waynesburg, Pa 15370
724-852-1357
todd.moore@mooremonument.com
www.mooremonument.com
Monument Company
Referred by Dave Pollock

New Representatives

Lisa Haberjack
Bridge Street Commons

PA Business Technology Conference

Want to make your business more tech savvy? Spend the day learning how to use business technologies to increase sales, become more efficient and decrease expenses. This full-day interactive event includes workshops on social media, security, e-marketing, search engine optimization, website design and more!

The keynote speaker, Adam Kmiec from Marc USA, will be discussing "Adapting to the Digital Age". As the Director of Interactive Marketing Innovation, Adam has worked with brands including BMW, Kellogg's, Adidas, US Army, Citibank and Nikon.

Chamber Members are invited to attend this exciting event at the discounted rate of only \$99! Use the promotional Code: tech09sbdc when registering. The event will be held on November 12, 2009 at Duquesne University. More information/Registration - www.conference.duq.edu or 412-396-1633.

Penna. Drug Card For Chamber Members

ChamberChoice recently partnered with PA Drug Card to provide members with a discounted prescription option at no additional cost. PA Drug Card users can save up to 75% at more than 50,000 national and regional pharmacies. For a complete list of participating pharmacies, please visit <http://pharmacylocator.unarxcard.com>.

The program is also linked to the ChamberChoice website at www.chamberchoice.com/PADrugCard. The PA Drug Card program can be accessed by you and your employees, and family members. For more information, contact the chamber office at 724-627-5926.

DISCOUNT HEALTH SAVINGS CARD:
Visit www.chamberchoice.com/PADrugCard to print your free discount card. All prescriptions processed through the program are completely confidential and you can receive savings up to 75%. This program also includes discounts on Eyeglasses, Nutritional Supplements, Diabetic Supplies, and more. Print as many cards as you need and share this FREE Discount Card with friends and family. The cards are pre-activated and can be used immediately!

ChamberChoice
1-800-377-3539

Member Info Needed For Chamber Newsletter

Would you like to see your business profiled in the monthly Chamber newsletter, "Chamber Chatter"? If so, please send a few paragraphs about your business to the chamber at waynesburgchamber@windstream.net. Photos and logos are encouraged! And the best part is that it is FREE!!!

Newsletter Advertising Space Available

Get your message out to you fellow members by advertising in "Chamber Chatter". Spaces are business card size and run \$300 for 11 issues. Monthly ads are also accepted at \$30 for a business card size. Ad copy can be changed monthly if desired. To reserve your space, call the Chamber office at 724-267-5926.

Greene County Education Center to Conduct BLS & Heartsaver AED Courses September 26

The Greene County Education Center of Westmoreland County Community College will conduct courses for health care providers in basic life support and heartsaver AED September 26 at the center in Waynesburg.

The Heartsaver AED with Pediatric AED course provides instruction in CPR, AED use, relief of choking in adults and children, infant CPR and the use of barrier devices for all ages. The course will run from 9 a.m. – 1 p.m. The cost is \$50 tuition plus an \$8 material fee and required text book.

The Basic Life Support for Health Care Providers course follows the 2005 AHA Guidelines and teaches the skills of CPR for victims of all ages (including ventilation with a barrier device, a bag device and oxygen), use of an AED on adults and children, and relief of foreign body airway obstruction (FBOA) in responsive and non-responsive victims. This course is designed for health care providers either in or out of the hospital setting, such as physicians, nurses, paramedics, EMTs, respiratory therapists, physical and occupational therapists, physician assistants, etc. Written testing and hands-on skill performance are required. A course card will be awarded upon successful completion of the course. The BLS for Healthcare Providers will be conducted from 1:30-6:15 p.m. The cost is \$58 tuition plus a \$10 material fee and required textbook.

To register, call WCCC at 1-800-262-2103, extension 4204.

Articles and Inserts

We always welcome press releases concerning your business. Photos are also encouraged. There is no charge for articles and photos. Newsletter Inserts may be placed in the newsletter at a cost of \$65. (Non-Profit rate-\$32.50). That is only 20 cents each and you are targeting Waynesburg Chamber members. Provide the office with 325 inserts, folded to 8 1/2 by 5 1/2 inches (same size as folded newsletter) no later than the 5th day of the month that you would like the insert to be included. There is a \$20 charge for materials received unfolded. Tri-fold brochures are not accepted. Mailing occurs so that the newsletter arrives the third week of the month.

Seventh and Last Covered Bridge Puzzle Now Available

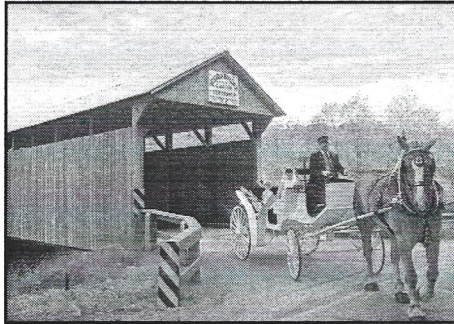
The seventh and final puzzle in the "Greene County Covered Bridges" puzzle series is now available from the Greene County Tourist Promotion Agency.

The Neddie Woods Covered Bridge puzzle marks the last release of the series of seven puzzles featuring images of Greene County's historic covered bridges. The puzzle features a bride and flower girl traveling through the bridge in a white, horse-drawn wedding carriage. Built in 1882 by Lisbon Scott, the Neddie Woods Covered Bridge is the oldest bridge that remains standing in the county. The bridge is of a queenpost truss type and measures 40 feet in length and 15 feet in width. Spanning Pursley Creek, the bridge is owned by Greene County and remains open to vehicular traffic.

The latest puzzle joins the six previous releases in the series, although only five are still available in limited quantities. The Scott Covered Bridge, released in November 2007, features a snow-covered bridge in a winter scene. The King Covered Bridge, released in March 2008, features a fall scene with a vintage car passing through the bridge. The White Covered Bridge, released in October 2008, features a summer scene and Civil War re-enactors outside the bridge. The Cox Farm Covered Bridge, released in November 2008, is a sepia-toned puzzle depicting two sheep walking across the bridge with a farm scene in the background. The vibrantly-colored Shriver Covered Bridge puzzle, released in June 2009, features the A.B.A.T.E. motorcycle club riding through the bridge. The first puzzle, the Carmichaels Covered Bridge, was released in September 2007, but has since sold out.

The puzzles cost \$20 each and serve as a fundraiser for the Tourist Promotion Agency. Puzzles may be purchased at the agency's office in the basement of the Greene County Airport in Waynesburg, or at the following locations in Waynesburg: AAA, The Frame Up & Gallery, Lippencott Alpacas, National City Bank, Rhodes & Hammers Printing, Inc., the Greene County Historical Museum gift shop and Southwest Regional Medical Center's gift shop.

For more information on the puzzles, call the Tourist Promotion Agency at 724-627-TOUR (8687), e-mail tourism@co.greene.pa.us or visit www.greencountytourism.org.



\$1500 REBATE on Window Coverings PLUS 25% Chamber Discount

This year, the federal government is offering a tax credit of up to \$1500 to homeowners who purchase certain qualifying window shades to save energy in their home. It's a win-win situation - your windows look beautiful, your home is warmer in winter and cooler in summer, and you receive a tax credit for 30% of the cost of your new window treatments. And every Chamber member always receives a substantial 25% discount off the retail price of all blinds and shades. That's a deal that's too good to pass up! Call Leslie Fehling at 724-627-4148, to schedule your in-home consultation today.



WCCC Registered 7,000th Student

Westmoreland County Community College registered its 7,000th student this fall surpassing previous enrollment records and reaching a college milestone. WCCC's previous highest enrollment, reached during the fall 1993 semester, was 6,874 students, with two-thirds of them attending part-time. This fall, more than 50 percent are enrolled full-time, which marks the first time in college history that full-time students outnumber part-time students. This growth in full-time students has led to a record number of class registrations - nearly 24,000 - which exceed the 1993 level by nearly 5,000 registrations.

This fall's enrollment also tops last fall's headcount of 6,416 by approximately 500 students.

The enrollment growth is also occurring at WCCC's seven education centers, which collectively show a 45 percent increase in class registrations and account for 20 percent of the college's total enrollment. Enrollment in online courses has also grown 15 percent compared to the fall 2008 semester.

The college is now in the process of adding more classes to its Late-Start Session, which begins September 17, to try to accommodate those students who were not able to get spots in the regular term classes.

Lippencott Alpacas

**National Alpaca Farm Days
Open House**
September 26 & 27, 2009
1:00-4:00 Sat. & Sun.

- Fun & Educational for All Ages
- Kids Activities
- Alpaca Seminars
- Handicapped Accessible
- Hand Spinning Demonstration
- Field Parking
- Local Vendors
- Bring Cameras!

724-852-4084
www.lippencottalpacas.com
265 Meadowbrook Rd., Waynesburg, PA

**GreeneScene
2nd Annual
Road Rally and
After Party**

Saturday, October 10th

Cars & Motorcycles
1st Place - \$300 Cash
2nd Place - Prize Package
3rd Place - Prize Package
For Each Route

Registration at the
Greene County Fairgrounds
Motorcycles at 2:00 p.m.
Cars at 3:00 p.m.

Driver Pre-Registration on or before
October 1 - \$25, October 2nd
through 10th - \$30.

Passengers are \$10 additional.

**For more information
call 724-627-2040**

Distinguished Service Award Nomination Deadline Nears

The Chamber of Commerce is reminding the public and members that the deadline for submitting nominee applications for the Distinguished Service Award is September 30th. The Chamber of Commerce has announced that the honor would be bestowed on an individual for outstanding service to the Waynesburg community. 2004 marked the first Organizational Distinguished Service Award which was presented to a civic organization or business who has also shown a lasting commitment to the Waynesburg area. These awards will be presented at the Annual Waynesburg Chamber of Commerce Membership Meeting and Banquet, which is scheduled for November 21st at Waynesburg College.

The winners of these prestigious awards will be selected from nominations received by the Waynesburg Chamber of Commerce. Nominees are judged on contributions to community welfare and betterment; participation in community activities and civic enterprises; lasting contributions to community welfare; leadership abilities; success in their individual vocations; personal progress; and cooperation with other individuals and organizations. The awards will be presented for direct, outstanding service to the community and has no association to involvement in the activities of the Chamber of Commerce.

Anyone can nominate an individual, organization or business for the awards by submitting a completed nominee application no later than 4:00 p.m. on September 30th. No late applications will be accepted.

Nomination applications are available by calling the Chamber office at 724-627-5926 or a printable version is available on the Chamber's website at www.waynesburg-chamber.com.

Date set for Chamber of Commerce Membership Banquet

The Waynesburg Area Chamber of Commerce will host their annual Membership Meeting and Banquet on Saturday, November 21st on the Waynesburg University Campus in the Dining Hall. The Chamber is celebrating a successful year by hosting the banquet connection with its Annual Distinguished Service Awards giving annual to an individual and a deserving civic organization or local business who has a proven commitment to making the Waynesburg community a better place. Following the presentation of this year's awards, members will be recognized for years of continued support of the Chamber and it's work. New members of the Chamber will also be recognized as well as those marking five, ten, fifteen and twenty year anniversaries.

The Chamber of Commerce serves the community in many ways throughout the year by sponsoring the annual Christmas Parade, the W.C.E.S. Career Day, Annual Greene County Business Expo and offering an Educational Scholarship. It also works with the business community to bring valuable information and services to its members through meetings, newsletters and social gatherings. The annual banquet is an opportunity to thank and salute all the members of the community who make the Chamber of Commerce a viable and thriving organization.

You do not have to be a member of the Waynesburg Area Chamber of Commerce to attend the event; the community is welcome and encouraged to attend.

Annual Banquet Sponsors Needed

Several special contributor levels will allow members business the opportunity to advertise and support the project. We are encouraging our members to become a sponsor of this worthwhile event. A special program book will list all the members and their years of involvement and all sponsors will be recognized. Sponsors will also receive special recognition in "Chamber Chatter" the monthly Chamber newsletter as well as on the website for the next twelve months where their corporate logo will appear along with their company name. Special corporate table signage and a listing in the evening's power point presentation.

EVENT SPONSOR \$1,000 - Includes corporate table for eight guests, name on invitations and cover of program book.

INVITATION SPONSOR \$500 - Includes name as sponsor on invitations

ENTERTAINMENT SPONSOR \$350

AWARD SPONSOR \$350

RECEPTION SPONSOR \$300

POSTAGE SPONSOR \$250

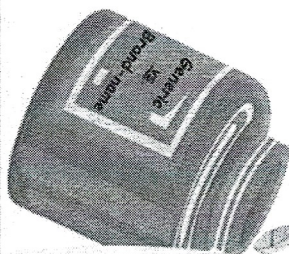
TICKET SPONSOR \$200 - Includes name as sponsor on tickets

LINENS SPONSOR \$150

PROGRAM SPONSORS

Diamond - \$300 Platinum - \$150 Gold - \$100 Silver - \$75 Bronze - \$50

PRESCRIPTION DRUG SAVINGS



Many brand-name prescription drugs have "generic" versions that contain the same active ingredients!

"Generic" drugs are priced lower because their development and marketing costs are less.

Ask Your Doctor . . .
If a "generic" substitute is available to help save money on your copy.

Source: ZWAVE 2007-2008, Saving Money on Prescriptions.

Chamber Choice

JRG
ADVISORS

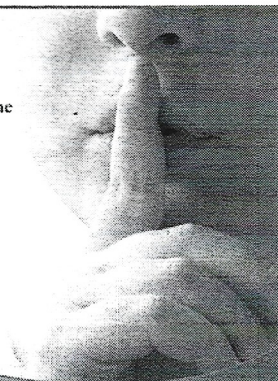
MAKE THE APPROPRIATE AND
CALL 724-627-5926

SILENCE YOUR STRESS

Take a few minutes of "silent time" in your daily routine to reduce stress and combat fatigue.

4 Reasons Why "Silence Can Be Golden"

- ✓ Increases Positive Energy
- ✓ Decreases Stress Hormones
- ✓ Promotes Thought Clarity
- ✓ Calms Nerves



Chamber Choice

JRG
ADVISORS

1924 - 2009

85

YEARS OF
EXCELLENCE

First Federal

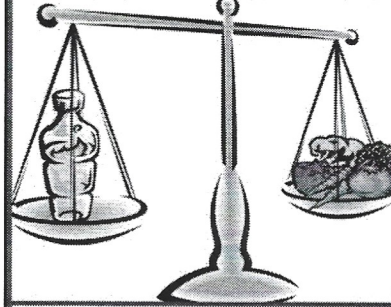
savings and loan association
of GREENE COUNTY

www.firstfederalofgreene.com

FDIC
INSURED



WEIGHING IN ON VITAMIN FORTIFIED WATER



Some "vitamin enhanced" bottled water contains added calories!

Incorporating fresh fruits and vegetables into your daily diet provides the best source of vitamins, minerals and antioxidants.



TIP! Adding a lemon or lime to your tap water for flavor will help to minimize cost, cut calories and protect the environment.

Source: Hope Health Letter, Vol.28 No. 3, Vitamins in bottled water

JRG
ADVISORS

For more information, review the attached document.

Chamber *Choice*

cb Community Bank

A century of service to our communities

TELEPHONE BANKING: 888-223-8099 or 724-966-8286

WAYNESBURG OFFICE

30 West Greene Street
724-852-1715



www.communitybank.tv Member FDIC



McCracken Pharmacy

595 East High Street
Waynesburg, PA 15370

724-627-5454



SOUTHWEST
REGIONAL

Medical Center

A New Direction in Health Care

www.sw-rmc.com



*Low Force Chiropractic
Disc Decompression
Massage*

Ph. & Fax 724-852-4222

1159 6th Street, Waynesburg, PA 15370

www.CoartChiro.com
Drs. Jason & Tisha Coart

**Reach your local
ready-to-buy audience**

Greene & Fayette Cos. Yellowbook

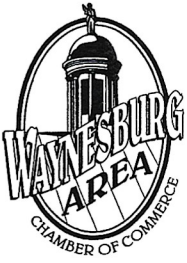
*Yellowbook.com • Search engine marketing
Website creation/maintenance*

 **yellowbook™**

 **COMMUNITY
ACTION SOUTHWEST**

**It Takes YOU...
to end poverty in our community.**

58 East Greene Street Waynesburg, PA 15370
724.852.2893
150 West Beau Street, Suite #304 Washington, PA 15301
724.225.9550
Toll Free: 877-814-0788
www.caswg.org



**WAYNESBURG AREA
CHAMBER OF COMMERCE**

143 East High Street
Waynesburg, PA 15370
Phone: (724) 627-5926
Fax: (724) 627-8017

E-mail: waynesburgchamber@windstream.net
www.waynesburgchamber.com

Return Service Requested

PRE SORT STANDARD
U.S. POSTAGE
PAID
Waynesburg, PA
Permit No. 18

**Did you see your name in this issue?
If not, call the office to find out how
to be in next month's issue.**

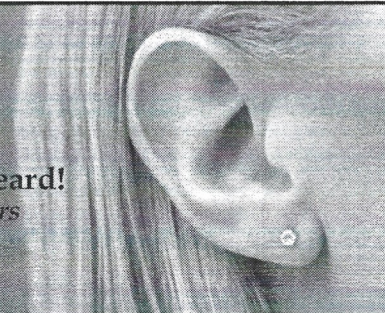
*Please be sure to share this
newsletter with others in
your place of business.*

HELP US KEEP OUR MAILING LIST CORRECT

If there is a mistake on your mailing label or the person whose name appears on the label is no longer with your company, please drop us a note or give us a call. We'll correct it right away.

**we ask questions.
we listen.**

It is time you were heard!
*Professional listeners
for over 20 years!*



See how ChamberChoice can be the
people, the power, the plan for you!
For more information, call 1-800-377-3539.

For all your legal needs.



Peacock Keller
Legal Services Since 1925

102 East High Street
Waynesburg, PA 15370

724-627-8331

*With other convenient offices in Washington,
McMurray, Bridgeville, Claysville.
In PA (800) 242-8897
www.PeacockKeller.com*

Make the switch

Make paying for your newspaper
subscription easy by switching to
E-Z Pay and you can receive either
a \$10 GetGo gas card or coupon for
grande pizza from Vocelli Pizza.



**Call today for details
724-222-2201**

**Main Switch
E-Z PAY**



EXPERIENCED AND ADVANCED EYE CARE

**Cataract Evaluation
Diabetic Retinopathy
Macular Degeneration
Glaucoma**



Jennifer Salvitti Davis, M.D.

SOUTHWESTERN PENNSYLVANIA EYE CENTER
"committed to excellence in eye care"

Greene County Medical Plaza • Suite 103 • 343 East Roy Furman Highway
Waynesburg, PA 15370 • 724-627-5383 • www.swpaeyecenter.com

SERVICES OFFERED AT OUR MEDICAL PRACTICE & COMPREHENSIVE SURGERY CENTER
LOCATED AT 750 EAST BEAU ST. IN WASHINGTON, PA:
NEW MICROINCISION CATARACT SURGERY • Oculoplastic Surgery
ReStor® Lens Implant Available • LASIK Surgery • Vitreoretinal Surgery