

# CHAMBER CHATTER

The Newsletter of the Waynesburg Area Chamber of Commerce  
 Phone: (724) 627-5926 • Fax: (724) 627-8017  
 E-mail: waynesburgchamber@windstream.net  
 www.waynesburgchamber.com

*To provide services and programs that will increase the success of member businesses and organizations and enhance the economy and quality of life in the Waynesburg Area. To remain a politically unbiased and enthusiastic resource to our members and the community at large.*



## Welcome New Members

**Mr. David Russo, Attorney**  
 51 West High Street  
 Waynesburg, Pa 15370  
 724-627-9466  
 724-627-0353 Fax  
 onulaw2@netscape.net  
 2 employees  
 Law Firm

**Domino's Pizza**  
 Mr. Rex A. Kennedy, General Manager  
 136 West Franklin Street  
 Waynesburg, PA 15370  
 724-627-3030  
 4 Employees  
 Dinning – Pizza Delivery

## Congratulations and Thank You!

Thank you to RJ LeeGroup, Inc. for donating six door prizes for the May General Membership Luncheon. Congratulations to Mary Pruss of Peacock Keller for winning the grand prize of a duffle bag filled with treats. Pam Blaker of The Perfect Arrangement, Lois Dille of Pre-Paid Legal Services, Miles Baker of First Federal Savings & Loan and Lucy Northrop of The Observer-Reporter also won prizes courtesy of RJ Lee.

## New Representatives

**Steve Barrett**  
 Greene County Messenger

## New Emails

**Dennis Slagle – BeeGraphix**  
 dslagle@beegraphix.com

## 18th Annual Chamber Scholarship Awarded

Connie Grimes, Chair of the Educational Scholarship Fund of the Waynesburg Area Chamber of Commerce announced that the 18th annual scholarship in the amount of \$1,500 was presented to Sarah Walko of Waynesburg Central High School. Eighteen year old Sarah plans to attend Lee University to pursue a degree in Intercultural Studies this fall. She is the daughter of Joseph and Pat Walko of Waynesburg, Pa. and a 2008 graduate of Waynesburg Central High School where she maintained a 4.0 grade point average.

This scholarship, the eighteenth for the Chamber, is presented each year to a Greene County senior who plans to attend a college or trade school. The 2008 scholarship was awarded based on grade point average and a 500 word essay on "What their life goal is and how they plan to address it through their education". The students community involvement and school activities are reviewed in the case

of a tie. Sarah was a special guest of the Chamber at the May General Membership Meeting of Chamber members where she read her winning essay entitled "My Purpose and Passion"

This year, forty-four applications for the scholarship were received by the Chamber of Commerce. The committee had a difficult task of selecting one winner from the qualified field. The committee members were Penny Ketchem, Chamber President; Lucy Northrop and Jon Stevens of the Observer-Reporter; Jeff Widdup of First Federal Savings & Loan, Connie Grimes of Community Bank, Pam Blaker of Direct Results-The Greene Saver; Lois Dille of Pre-Paid Legal Services; Sheila Barger of First National Bank; Stephanie Franks of Penn Commercial; Dr. Nancy Davis and Anna Petrovich of Greene County Education Center of Westmoreland County Community College, Barb Wise of RJ Lee Group, Inc. and Joy Eggleston of Southwest Regional Medical Center.

**ChamberChoice**  
 Health Plans for All Business

# Annual Golf Outing – A Big Hit!

On Friday, May 2nd, a record twenty-five teams descended on Rohanna's Golf Course in Waynesburg for the annual Chamber of Commerce Golf Outing. Beautiful weather and delicious food made for a great day of golf and networking. A special thank you goes to our Event Sponsor - Washington Greene County Job Training Agency.

## 2008 WINNERS



1st - Behm Funeral Home - \$300 cash



2nd – GCIDC - \$200 cash

3rd - Rohanna's Golf Course - Pirates tickets and parking pass – donated by Charlie Riggs

**SKILL PRIZES** \$50 Cash - Donated by Pennsylvania Services Corp. an affiliate of Foundation Coal

*Longest Drive Men* - Ed Agnew

*Longest Drive Women* - Janet Cosgray

*Longest Putt Men* - Kevin Pincavitch

*Longest Putt Women* - no winner

*Close to Pin Men* - Glenn Roby

*Close to Pin Women* - Kathy Richards

*Cash Hole* - Miles Davin

*Putting Contest* - Won by Kevin Pincavitch

-Sponsored by Ford Business Machines - A round of golf for four at Mystic Rock at Nemaocolin Woodlands Resort

*Hole in one* – Shadow box donated by The Covered Bridge Gallery – No winner

**\*\* Thank you to our Sponsors \*\***

**Snack Cart Sponsor** ... Southwest Regional Medical Center

**Skill Prizes Donor** . Penna. Services Corp., an affiliate of Foundation Coal, Inc.

**Luncheon Sponsor**.....Waynesburg University

**Breakfast Sponsor**.....American Oil & Gas

**Beverage Sponsor**.....Community Bank

**Invitation Sponsor** Ketchem Construction Co., Inc.

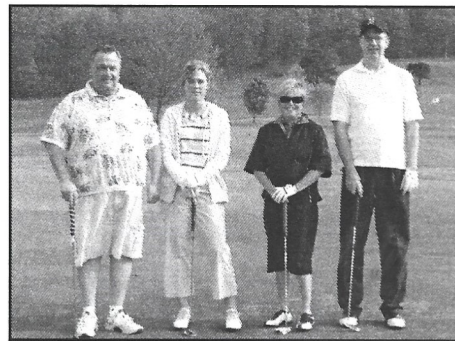
**Putting Contest Sponsor** .... Ford Business Machines, Inc.

**Postage Sponsor**.....Observer-Reporter

**Sign Sponsor**.....Rhodes & Hammers Printing



Washington-Greene Job Training Agency – Event Sponsor



Washington-Greene Job Training Agency – Event Sponsor

## Hole and Tee Sponsors

Community Action

First Federal Savings & Loan

Greene County Education Center

Yost Drilling

Baily Agency – Coldwell Banker

Edward Jones

Tri-State Health Care

Allan's Waste Water Services

Greene County Primary Care

Vaccari Enterprises

First National Bank of Pennsylvania

Chamber Choice

State Representative Bill DeWeese

DK Electric

Consol Energy, Inc.

Ford Business Machines

State Representative Tim Solobay

Strykers Bar & Grill

Southwest Regional Medical Center

Diamond Y Enterprises

Southwestern Penna. Eye Center

Hawg Hauling

Washington Greene County Job Training Agency

Milliken & Throckmorton Funeral Home

The Greene Team, Pam Snyder, Chairman and Dave Coder

Ron Diaz – Nationwide Insurance

## Cart Sponsors

RJ Lee Group, Inc.

Sherwin Williams

Wade's Body & Frame Shop

Strykers Bar & Grill

Chamber Choice

Travel Savers

Waynesburg Milling

Ford Business Machines

Cornerstone Care

PcSquared

Marge Fox, District Attorney

Scotty's Pizza

Wayne Lumber

Laick Design

Rhodes & Hammers Printing

Allan's Waste Water Service

Papa Bear's Doggy Den

Trader's Plumbing & Heating

Pollock Morris

Washington Greene Job Training

Mary Kay Cosmetics, Kippie Whitlatch &

Penny Ketchem

## \*\* Door Prize Donors \*\*

First Federal Savings & Loan

RJ LeeGroup, Inc.

Rohanna's Golf Course

Lindsay Blair

Scott Enterprises

The Design & Copy Center

Janice Flynn State Farm

Lewis Limo & Michael's Auto

Community Bank

Hot Rod's House of Bar-B-Que

Yellow Book

Scotty's Pizza

Southwest Regional Medical Center

Holiday Hair

Specialty Herbal Products

Mark IV Office Supply

Waynesburg University

First National Bank of Penna.

Wendy's Old Fashioned Hamburgers

Waynesburg Milling

Baily Insurance Agency

Dukate's Lasting Impressions

Gray Manor Auction

Waddell & Reed

Special Events Commission

Greene County Industrial Development, Inc.

## \*\* Hospitality Donors \*\*

Chamber Choice

RJ LeeGroup, Inc.

Dukate's Lasting Impressions

Rhodes & Hammers Printing

Waynesburg Milling

DK Electric

(continued on next page)

## Annual Golf Outing – A Big Hit! (continued)

Ford Business Machines  
Stryker's Bar & Grill  
Southwest Regional Medical Center  
Sam's Club  
Greene County Industrial Development, Inc.

### \*\* Committee & Event Volunteers \*\*

*Dave Stoneking* – Mark IV Office Supply  
– Event Chair

*Penny Ketchem* – Chamber President

*Jay Hammers* – Rhodes & Hammers Printing

*Sheila Barger* – First National Bank of Pa.

*Randy Rohanna* – Rohanna's Restaurant & Golf Course

*Barb Wise* – R.J. LeeGroup, Inc.

*Mike Baily* – Baily Insurance, Inc., Coldwell Banker

*Dan Morgan & Ed Cupp* – Ford Business Machines

*Anna Petrovich* – Greene County Education Center of Westmoreland County Community College

*Melody Longstreth, Amber Raber, Kristen Corbett, Angelo Naccarato* – Waynesburg Area Chamber of Commerce

### 2008 Teams

Washington Greene County Job Training Agency, Inc.

Southwest Regional Medical Center

Observer-Reporter

Waynesburg University

Bell's Wholesale Grocery

First Federal Savings & Loan

Behm Funeral Homes, Inc.

Greene County Primary Care

Greene County Industrial Development

Don Chappel, Bob Dean, C.J. Criss, Charlie Riggs

Cumberland Coal Resources, LP

Papa Bear's Doggy Den

National City

Rolling Meadows Nursing & Rehabilitation

Flagship Rehabilitation

RJ LeeGroup, Inc.

Ford Business Machines

Rohanna's Golf Course & Restaurant

Mark IV Office Supply

The Golf Bags

Graysville Store

Yost Drilling

Diamond Y Enterprises

Jawg Hauling

Cory Grandel

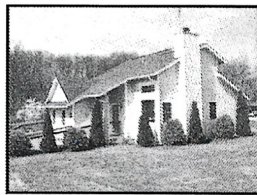
Mark your calendar for the 2009 Golf Outing which will be held at Rohanna's on Friday, May 1st, 2009

## Members in the Spotlight

### NOBLE CONTRACTING, INC.

Noble Contracting, Inc. has been serving Greene County and surrounding areas for five years. They do all forms of construction and remodeling. This can begin with anything from Kitchens, baths, additions, decks, and more. Noble Contracting, Inc. is owned by Jim Ketchem and Brad Moore, and is highly recommended by customers. For more information call 724.883.3046.

### NORTHWOOD REALTY



Northwood Realty Services has recently moved into the Waynesburg Real Estate Market with its acquisition of Herrington and Long Real Estate. This marks the 35th office for Northwood Realty in a market area covering western Pennsylvania and eastern Ohio.

Northwood opened its first office in 1956 and its mission has remained constant, to provide legendary service to all clients along with uncompromising integrity and ethics.

Our Waynesburg Office is located at 244 Elm Drive. Currently employing 7 agents, we are excited about being in Waynesburg and look forward to our office growing and changing the face of real estate in Waynesburg.



### GIRL SCOUTS WESTERN PENNSYLVANIA



Girl Scouts Western Pennsylvania is the catalyst where girls imagine, explore, create, have fun, and inspire others by discovering more about themselves and their community, connecting to new ideas and people, and taking action to make the world a better place.

Because the world is ready for a new kind of leader, Girl Scouts empowers girls

- To make a difference
- To value diversity and inclusion
- To have a strong sense of self and not be afraid to stand up and say what's on her mind
- To expand her horizons, potential, and friendships through local and global involvement

In this fast-paced, changing world, Girl Scouting moves at the speed of girl.

So should you! Call 800.248.3355 or visit [www.gswpa.org](http://www.gswpa.org).

## WAYNESBURG UNIVERSITY

Waynesburg University is a private, comprehensive Christian university offering doctoral, graduate and undergraduate programs in more than 70 academic concentrations. Founded in 1849 by the Cumberland Presbyterian Church, Waynesburg University is located on a contemporary campus in the hills of southwestern Pennsylvania, with three adult centers located in the Pittsburgh region. The University is a member of the Council for Christian Colleges and Universities (CCCU) and is one of only 27 Bonner Scholar schools in the country, offering local, regional and international opportunities to touch the lives of others through service.



### Have Your Degree In 18 Months or Less At Penn Commercial!

People may believe that in today's world the education they need to have a great career will require four years of college. But at Penn Commercial, you can obtain the education and training you need for a great career in just 12 to 18 months.

Penn Commercial offers hands-on programs of study in four distinct areas where employment opportunities are vast:

**Business:** Business Administration - Accounting, Business Administration - Human Resources, Business Administration - Marketing/Management, Retail Management, Legal Office Administration, and Executive Office Administration

**Medical:** Phlebotomy, Medical Assisting, Medical Office Administration, and Medical Billing & Coding.

**Technical/Trade:** Electrician, HVAC, Engineering Drafting with CAD, and Network Administration.

**Spa/Salon:** Cosmetology, Cosmetology Teacher's Program, Nail Technician and Massage Therapy.

(continued on next page)

## Members in the Spotlight (continued)

Penn Commercial is conveniently located right in Washington, PA; in a large modern facility where the atmosphere is professional and relaxed. It is a positive educational environment where success is emphasized and goals are turned into reality. Penn Commercial emphasizes "learning by doing." Programs are taught in a combination of learning labs and classrooms because this prepares students to enter the workforce ready to contribute from day one. In the majority of our programs you'll also have an externship before you graduate which will give you valuable, real-world experience. As a result, Penn Commercial graduates are sought-after by employers who do not have the resources to provide "on-the-job training."

Not only can you earn your credentials in 18 months or less at Penn Commercial, you can also take classes during the day or night when it is most convenient for you. In addition to a flexible schedule, we also offer free parking and an onsite childcare facility. Our support departments are onsite to assist you with enrollment, financial aid, career services, student advising and

much more. Financial aid and scholarships are available for those who qualify and upon graduation we will provide you with lifetime placement assistance.

Another unique aspect of Penn Commercial is that we offer classes every twelve weeks. Students can begin classes quarterly in October, January, April and July. A spokesperson for Penn Commercial explains, "Quarterly starts are tremendously convenient for our students. While the vast majority of colleges are on a semester schedule and begin classes in August or September, we have found that many people like having the option of choosing to start at a time that's convenient for them. At Penn Commercial they can choose to begin in a non-traditional late Fall start in October or they can choose to begin their studies and get a head start on the competition in the early Summer start in July"

Penn Commercial is currently enrolling for the Summer Quarter which begins on July 7th. For a tour of the campus or to meet with an Admissions representative, call 1.866.368.0614. You can also visit [www.penncommercial.edu](http://www.penncommercial.edu) for more information on our scholarships and programs.

[www.penncommercial.edu](http://www.penncommercial.edu) for more information on our scholarships and programs.

### BIG BROTHERS BIG SISTERS

"Little Moments, Big Magic!" Big Brothers Big Sisters of Greater Pittsburgh serves Allegheny, Washington and Greene counties. We currently have over 80 matches in Washington and Greene counties. We need volunteers in Greene county to be 'matched' with a little brother or little sister. Share a few hours per month and make a difference in the life of a child who needs a friend.

Big Brothers Big Sisters is the largest youth mentoring organization in the United States. With more than 400 affiliates across all 50 states, Puerto Rico and Guam, it served 242,000 children in 2006 – more than twice the number five years ago. The Big Brothers Big Sisters mission is to help children reach their potential through professionally supported, one-to-one relationships with mentors that have a measurable impact on youth.

For more information, call 724-228-9191; e-mail [stthomas@bbbspgh.org](mailto:stthomas@bbbspgh.org) or visit [www.bbbspgh.org](http://www.bbbspgh.org).



Greene County Business Expo

Sponsored by the Waynesburg Area Chamber of Commerce

SEPTEMBER

18



First Assembly of God Church  
Waynesburg, PA  
12:00 p.m. to 6:00 p.m.  
Call 724-627-5826 for more information

**Community Bank**  
*A century of service to our communities*

TELEPHONE BANKING: 888-223-8099 or 724-966-8286

WAYNESBURG OFFICE

30 West Greene Street  
724-852-1715



[www.communitybank.tv](http://www.communitybank.tv) Member FDIC



On Your Side®

**Ron Diaz**

Principal Agent  
Ron Diaz Insurance Agency  
Nationwide Insurance

1644 East High Street  
Subway Plaza  
Waynesburg, PA 15370

Tel 724-627-7252

Fax 724-852-2230

Tel 866-420-7270 Toll Free  
[diazr6@nationwide.com](mailto:diazr6@nationwide.com)

## Articles and Inserts

We always welcome press releases concerning your business. Photos are also encouraged. There is no charge for articles and photos. Newsletter Inserts may be placed in the newsletter at a cost of \$65. (Non-Profit rate-\$32.50). That is only 20 cents each and you are targeting Waynesburg Chamber members. Provide the office with 325 inserts, folded to 8 1/2 by 5 1/2 inches (same size as folded newsletter) no later than the 5th day of the month that you would like the insert to be included. There is a \$20 charge for materials received unfolded. Tri-fold brochures are not accepted. Mailing occurs so that the newsletter arrives the third week of the month.



Please make a note that  
the Chamber has a new  
email address:

[waynesburgchamber@windstream.net](mailto:waynesburgchamber@windstream.net)

## Newsletter Advertising Space Available

Get your message out to you fellow members by advertising in "Chamber Chatter". Spaces are business card size and run \$300 for 11 issues. Monthly ads are also accepted at \$30 for a business card size. Ad copy can be changed monthly if desired. To reserve your space, call the Chamber office at 724-267-5926

*Contributing Writer – Waynesburg  
University Intern – Kristen Corbett.*



## McCracken Pharmacy

595 East High Street  
Waynesburg, PA 15370

724-627-5454



## SOUTHWEST REGIONAL Medical Center

A New Direction in Health Care

[www.sw-rmc.com](http://www.sw-rmc.com)



## PENNSYLVANIA CHIROPRACTIC & REHAB CENTER

*Low Force Chiropractic  
Disc Decompression  
Massage*

Ph. & Fax 724-852-4222

1159 6th Street, Waynesburg, PA 15370

[www.CozartChiro.com](http://www.CozartChiro.com)

Drs. Jason & Tisha Cozart



**It Takes YOU...  
to end poverty in our community.**

58 East Greene Street Waynesburg, PA 15370  
724.852.2893

150 West Beau Street, Suite #304 Washington, PA 15301  
724.225.9550

Toll Free: 877-814-0788

[www.caswg.org](http://www.caswg.org)



Dr. Frank Hughes

## Dr. Webb

TRI-STATE HEALTH CARE

*Chiropractors*

20 Miller Lane, Waynesburg, PA 15370

724-852-2727

Fax: 724-852-1893

[www.tristatewebb.com](http://www.tristatewebb.com)

**Do you have Part-Time, Seasonal or Non-Traditional  
employees without health insurance coverage?  
If yes, ChamberChoice now offers a solution!**

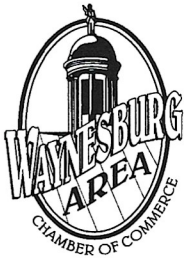
**Contact ChamberChoice today to learn the  
details about our voluntary health insurance plans  
without pre-existing conditions and with access  
to a national PPO and RX network!**

**ChamberChoice**

1.800.377.3539

[www.chamberchoice.com](http://www.chamberchoice.com)

[chamberchoice@jrgadvisors.net](mailto:chamberchoice@jrgadvisors.net)



**WAYNESBURG AREA  
CHAMBER OF COMMERCE**

60 West High Street  
Suite 4

Waynesburg, PA 15370

Phone: (724) 627-5926

Fax: (724) 627-8017

E-mail: waynesburgchamber@windstream.net

www.waynesburgchamber.com

PRE SORT STANDARD  
U.S. POSTAGE  
PAID  
Waynesburg, PA  
Permit No. 18

Did you see your name in this issue?  
If not, call the office to find out how  
to be in next month's issue.

*Please be sure to share this  
newsletter with others in  
your place of business.*

**HELP US KEEP OUR MAILING LIST CORRECT**

If there is a mistake on your mailing label or the person whose name appears on the label is no longer with your company, please drop us a note or give us a call. We'll correct it right away.

*For all your legal needs.*

*Mary K. Pruss, Esquire*



**Peacock Keller**  
*Legal Services Since 1925*

102 East High Street  
Waynesburg, PA 15370

724-627-8331  
mary.pruss@peacockkeller.com

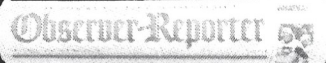
*With other convenient offices in Washington,  
McMurray, Bridgeville, Claysville.*

*In PA (800) 242-8897  
www.PeacockKeller.com*

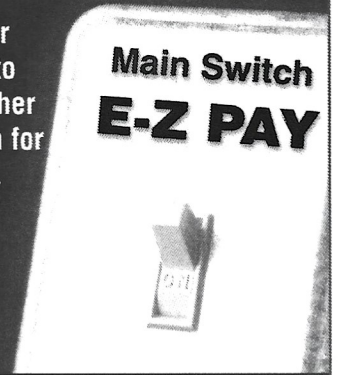
**Make the switch**

Make paying for your newspaper  
subscription easy by switching to  
E-Z Pay and you can receive either  
a \$10 GetGo gas card or coupon for  
grande pizza from Vocelli Pizza.

**Main Switch  
E-Z PAY**



Call today for details  
724-222-2201



**EXPERIENCED AND ADVANCED EYE CARE**

**Cataract Evaluation  
Diabetic Retinopathy  
Macular Degeneration  
Glaucoma**



Jennifer Salvitti Davis, M.D.



**SOUTHWESTERN PENNSYLVANIA EYE CENTER**  
*"committed to excellence in eye care"*

Greene County Medical Plaza • Suite 103 • 343 East Roy Furman Highway  
Waynesburg, PA 15370 • 724-627-5383 • www.swpaeyecenter.com

SERVICES OFFERED AT OUR MEDICAL PRACTICE & COMPREHENSIVE SURGERY CENTER  
LOCATED AT 750 EAST BEAU ST. IN WASHINGTON, PA:

NEW MICROINCISION CATARACT SURGERY • Oculoplastic Surgery  
ReStor® Lens Implant Available • LASIK Surgery • Vitreoretinal Surgery

**SEE THE LOAN SPECIALIST**

*First Federal*  
*savings and loan association*

**FDIC**

*of GREENE COUNTY*



WAYNESBURG WASHINGTON CARMICHAELS UNIONTOWN TAYLORSTOWN

www.firstfederalofgreene.com