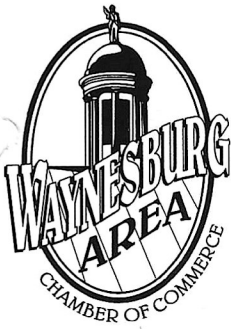


CHAMBER CHATTER



The Newsletter of the Waynesburg Area Chamber of Commerce
 Phone: (724) 627-5926 • Fax: (724) 627-8017
 E-mail: waynesburgchamber@windstream.net
 www.waynesburgchamber.com

To provide services and programs that will increase the success of member businesses and organizations and enhance the economy and quality of life in the Waynesburg Area. To remain a politically unbiased and enthusiastic resource to our members and the community at large.

Welcome New Board Officers

The Board of Directors elected its 2013 officers at the Re-Organizational meeting. From left to right: Cindy Crouse-First Federal Savings & Loan – Secretary, Cassie Teegarden-Greene County Industrial Development Authority – Vice-President, Joy Eggleston-Southwest Regional Medical Center – President, Larry Marshall-Waynesburg Prosperous & Beautiful – Treasurer.



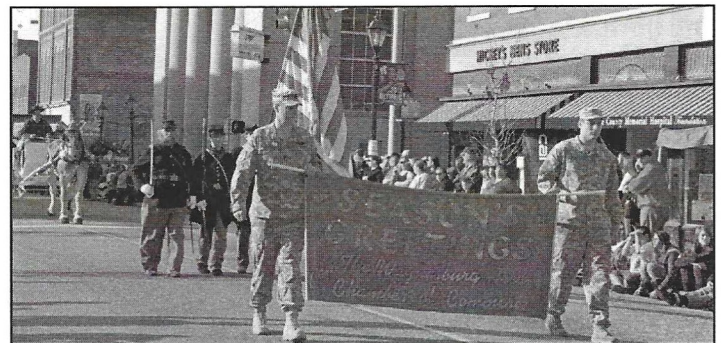
2012 Christmas Parade

Jeff McCracken and daughter Elissa, Miss Ohio 2012, ride in the Chamber's Annual Downtown Christmas Parade as its Grand Marshals. Jeff was selected as the Chamber's Distinguished Service Award recipient for 2012. Accompanying Jeff and Elissa are Kendall Lewis, Miss Rain Day 2012 and Karen Behm, representing the Posthumous DSA winner Joe Behm. Visit the Chamber's website for more photos from the Christmas Parade which was sponsored this year by Greene County Tourism.



Watch The 2012 Waynesburg Area Chamber Of Commerce Downtown Christmas Parade

The parade can be viewed online at <http://wctv.waynesburg.edu>. Click the "Playlists" tab and scroll to the bottom of the program listings. Click "Waynesburg Christmas Parades" and select the first parade listed. Previous Waynesburg Christmas parades also are available online. The parade coverage was produced by Waynesburg University's Department of Communication. Department students and faculty worked on-camera and in behind-the-scenes crew positions. "The production is our Communication Department's Christmas gift to Greene County," said Waynesburg University's director of TV operations, Bill Molzon. Parade coverage also includes an excerpt from a concert presented by Waynesburg University's Department of Fine Arts and the Music Program, "A Renaissance Christmas." The concert was performed in Roberts Chapel on the University's campus.



Tax Changes For 2013

	<u>2013</u>	<u>2012</u>
Mileage rate for business miles:	56.5 cents/ mile	55.5 cents/mile
Mileage rate for medical/moving expenses:	24 cents/ mile	23 cents/mile
Mileage rate for charitable contributions:	14 cents/ mile	14 cents/mile
Social Security employee payroll tax:	6.2%	4.2%
Social Security employer payroll tax:	6.2%	6.2%
Social Security Cap:	\$113,700	\$110,100
PA Unemployment – Employee Contribution:	.07%	.08%
IRA Contribution (Traditional or Roth):		
\$5,500 2013 Tax Year - under age 50		
\$5,000 2012 Tax Year - under age 50		
\$6,500 2013 Tax Year - age 50 & over		
\$6,000 2012 Tax Year - age 50 & over		

NEW FOR 2013

.9% Additional Medicare Tax on wages and net self-employment income in excess of \$200,000 (\$250,000 joint and \$125,000 married filing separate returns)

-This tax is only on the individual; the employer does not match it

-Employer is required to withhold it once an employee reaches \$200,000 regardless of filing status. Form 941 will be modified for this additional .9% medicare tax. No change will be made to the W2.

Minimum wage

Rates are effective as of dates listed below:

- \$7.25 per hour effective July 24, 2009

Training wage for employees under 20 years old:

- No longer allowed after July 23, 2009

Tipped employees:

- **An employer may pay a minimum of \$2.83 per hour to an employee who makes \$30.00 per month in tips. If an employee does not receive more than \$30.00 per month in tips, the employer must pay the regular minimum wage.**
- **The employer must make up the difference if the tips and \$2.83 do not meet the regular Pennsylvania minimum wage**

For all other exceptions to the minimum wage increase, please see www.dli.state.pa.us

Make sure that your mandatory posters are up to date and posted in your workplace!!!!!!

All posters are provided online at no cost to you! See below for web addresses.

For federal posters: www.hrdocs.com/posters

For state posters: www.dli.state.pa.us or call 717-783-8794

Provided by: Padgett Business Services - AMI CREE and BILL KARNS, Owners

66 EAST HIGH STREET
WAYNESBURG, PA 15370
(724) 627-3800

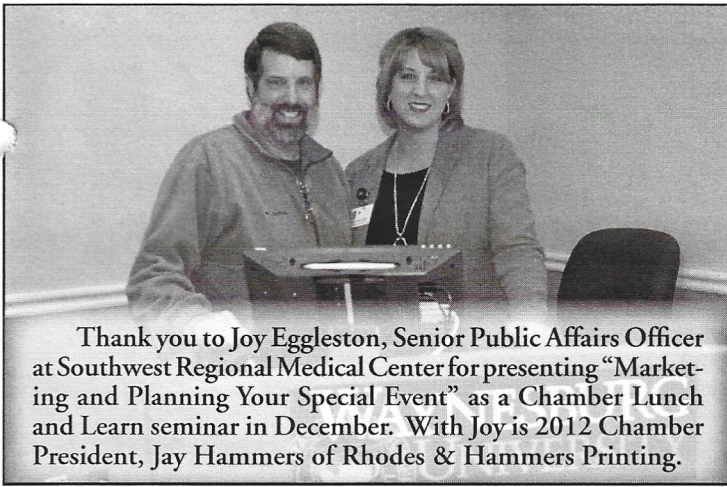
Member in the Spotlight

**Coming Early This Year!
Hampton Inn Waynesburg**



Coming to the Waynesburg area early this year will be the newest in hotel lodging accommodations. A new Hampton Inn located at 227 Greene Plaza, adjacent to Interstate 79 at Route 21, will open in early April 2013. The hotel is being developed by Horizon Properties Group of Canonsburg and owned by Greene County Hotel Associates, LP. This 5 story, 80 room hotel will feature a mix of king and double queen units as well as four spacious suites that include full size sleeper sofas. Each room will offer a refrigerator and microwave, 40" HD television, new Cloud Nine™ Hampton Beds and high speed WiFi. Amenities in the hotel will include an indoor swimming pool, state-of-the-art fitness center, 24-hour suite shop, business center and a 700 square foot meeting room with user friendly audio visual equipment available. As like all Hampton Inns, a complimentary On the House® hot breakfast is served daily. Whether you are staying for business or pleasure, the hotel looks forward to providing you with superior accommodations and all the services you have come to expect from Hampton® General Manager Ursula Myhalsky will be circulating around Waynesburg and neighboring communities this winter to introduce everyone to the new Hampton Inn property and services it will provide. Site tours will be offered closer to the planned opening date of April 2, 2013. In the event you have questions, would like to schedule a tour or make reservations, please contact Ursula at the new hotel number of 724-802-1010.





Thank you to Joy Eggleston, Senior Public Affairs Officer at Southwest Regional Medical Center for presenting "Marketing and Planning Your Special Event" as a Chamber Lunch and Learn seminar in December. With Joy is 2012 Chamber President, Jay Hammers of Rhodes & Hammers Printing.



McCracken Pharmacy

595 East High Street
Waynesburg, PA 15370

724-627-5454



SOUTHWEST REGIONAL Medical Center

A New Direction in Health Care

www.sw-rmc.com



Low Force Chiropractic
Disc Decompression
Massage

Ph. & Fax 724-852-4222

1159 6th Street, Waynesburg, PA 15370

www.CozartChiro.com
Dr. Jason Cozart



COMMUNITY
ACTION SOUTHWEST

It Takes YOU...
to end poverty in our community.

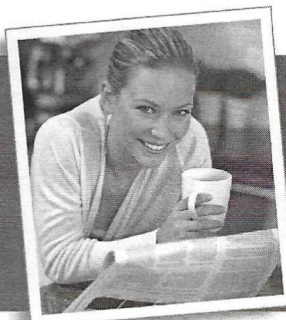
58 East Greene Street Waynesburg, PA 15370
724.852.2893
150 West Beau Street, Suite #304 Washington, PA 15301
724.225.9550
Toll Free: 877-814-0788
www.caswg.org



54 Church Street, Waynesburg, PA 15370
rhprint@windstream.net

Business Cards • Brochures • Letterheads • Envelopes
Invitations • Labels • Laminating • Rubber Stamps
Carbonless Forms • Design and Layout • Political Printing

724-852-1457
Fax 724-627-4335



Free Newspaper

Text observer to 55678 for
a FREE one month trial of
the Observer-Reporter.*

*New customers only.
Certain restrictions apply.

Your life. Your town. Your news.

724-222-2201 www.observer-reporter.com

BAILY INSURANCE AGENCY, INC.

Comprehensive Risk Management Services



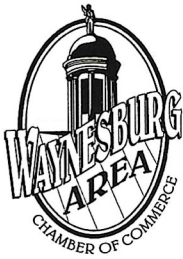
David Baily, CWCA, CIC

Benefits to Our Clients:

- ⊗ Create cost saving HR and employee benefit solutions
- ⊗ Reduce expenses for safety, compliance, and workers' compensation
- ⊗ Provide solutions for estate & life insurance issues specific to business owners

724-627-6121 • Cell 412-952-5522

Email: dbaily@bailyagency.com



WAYNESBURG AREA CHAMBER OF COMMERCE

143 East High Street
Waynesburg, PA 15370
Phone: (724) 627-5926
Fax: (724) 627-8017

E-mail: waynesburgchamber@windstream.net
www.waynesburgchamber.com

Return Service Requested

**Did you see your name in this issue?
If not, call the office to find out how
to be in next month's issue.**

***Please be sure to share this
newsletter with others in
your place of business.***

HELP US KEEP OUR MAILING LIST CORRECT

If there is a mistake on your mailing label or the person whose name appears on the label is no longer with your company, please drop us a note or give us a call. We'll correct it right away.

The Most Experienced Professionals in Eye Care...



**SOUTHWESTERN PENNSYLVANIA
EYE CENTER**
*committed to
excellence in eye care*



Jennifer Salvitto Davis, M.D. Sean F. Piramici, M.D.

Custom Cataract Surgery
Cornea Surgery | Retina Surgery
Oculoplastic Surgery | LASIK
Diabetic Eye Care | Glaucoma
Macular Degeneration | Facial Aesthetics

Greene County Medical Plaza / Suite 103 / 343 East Roy Furman Highway
Waynesburg, PA 15370 / 724.627.5383 / www.swpaeyecenter.com

Eye Center & Surgery Center one location... 750 East Beau Street / Washington, PA

1924 - 2013

FREE Internet Banking
www.firstfederalofgreene.com



*savings and loan association
of GREENE COUNTY*

FDIC INSURED 

**Looking for more value in
your employee benefits plan?**



Health Insurance, with \$15,000 Term Life Insurance
Dental and Vision Plans
Voluntary Life Benefits
Financial Services
Online Human Resources Tools
Business and Personal Insurance
Long Term Care Insurance
Limited Benefits Medical Plans
and so much more!

**For more information,
contact us today!**

ChamberChoice

1-800-377-3539 chamberchoice@jrgadvisors.net www.chamberchoice.com

cb
**Community
Bank**

*Two Convenient
Waynesburg Locations*

Waynesburg Office
30 West Greene Street
724-852-1715
&
Greene Plaza Office
100 Miller Lane
724-627-3134

Telephone Banking 888-223-8099
www.communitybank.tv

Proudly serving Greene County for over 110 years