

July 2023

CHAMBER CHATTER

*The Official Newsletter of the
Greene County Chamber of Commerce*

Phone: (724) 627-5926

Email: info@greenechamber.org

www.greenechamber.org



Find us on
Facebook



Follow us on
Instagram

Wednesday,
July 26th



11:30-Networking
Noon-Lunch and Program
At Waynesburg University
51 W. College Street

Cost - \$20/member \$25/non-member

This event is joint meeting with the
Rotary Club of Waynesburg and its
members.

Register by Wednesday, July 21st
by emailing guest name(s) to
info@greenechamber.org or fill out
the google form.

In Partnership With:



Lunch will be provided by
Aladdin Food Service and will
consist of Santa Fe chicken
wrap, turkey bacon club
wrap, roasted vegetable
wrap, pasta & sweet pea
Salads, chips, & berry bar
with angel food cake

Reservations made must be paid for unless
cancelled 48 hours in advance.

June Business Connection Luncheon

Thank you to our sponsors, the GC Farm Bureau and the GC Conservation District, for supporting our monthly networking luncheon. Thank you as well to Aladdin Campus Dining for the wonderful meal and all of our speakers!



June Lunch & Learn

We enjoyed a wonderful presentation from Reimagine Main Street's Natalie Gloady about digital marketing world.



June Coffee & Commerce

Enjoyed casual conversation at our Coffee & Commerce at Fruition Bows & Brews



**Live Entertainment • Fireworks
Children's Activities**

Food • Games • Craft Booths • Shopping



Rain or Shine
July 29th
Waynesburg, PA
Free Admission!

For more information: 724-627-8111
www.raindayfestival.com

WELCOME NEW MEMBERS

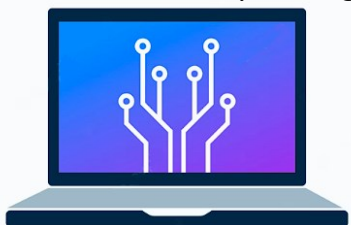


Bali Brothers' Kitchen

Laura Suyasa - Owner

724-531-1363

Food Truck Located
on East Greene Street, Near Napa
Waynesburg, PA 15370



iTech Connections LLC

iTech Connections

Joshua McCartney - Owner/Operator

99 South Washington Street

Waynesburg, PA 15370

itech.dsc@gmail.com

<http://itechconnections.net>

Members Receiving their Ribbon Cutting Certificate!

Shoe Sensation—(on the right)

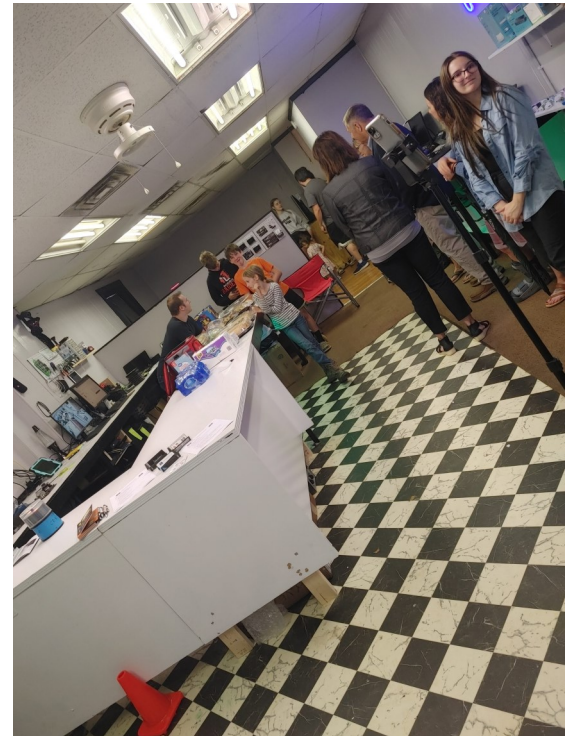
Bali Brothers' Kitchen—(bottom
left)

Roman's Acupuncture &
Wellness—(bottom right)



RIBBON CUTTINGS

Held 3 ribbon cutting this month for new businesses!
Bali Brothers' Kitchen, iTech Connections, and Roman's
Acupuncture & Wellness's new EmFace Unit!





DRESS FOR SUCCESS®
PITTSBURGH

AUGUST 4-7 | WASHINGTON

FAB SALE

Our Pop-Up
Inventory Reduction Sale

[Click](#) for additional details and to secure a bag.



WE'VE GOT GREAT PRICES!

WGL Energy
9.23¢ / kWh*

West Penn Power
9.92¢ / kWh**

LEARN MORE

NO MORE PRICE SPIKES

World Kinect, in partnership with WGL Energy, is offering you a special residential fixed price of 9.23¢/kWh. With our price, you'll pay the same throughout the year which means no price spikes or hidden surprises. That's a savings of 7% from West Penn Power's June price increase.

ACT NOW! THIS SPECIAL OFFER EXPIRES ON July 14, 2023.

When you choose World Kinect and WGL Energy for your electricity, you'll enjoy the peace of mind that comes with affordable electricity and budget certainty for your home.

IT'S EASY!

Go to wglenergy.com/kinect to get started. And, as a ChamberChoice participant, your employees, family members and friends in the WGL Energy service areas are also eligible for exclusive electricity offers!

*WGL Energy's price included in this offer represents the effective price after discount of WGL Energy's standard price and is available only to qualified customers who enroll in this offer between 06/15/23 and 07/15/23 using applicable promotion code.

**West Penn Power price as of June 1, 2023. To see current utility rates, click [here](#).

Bowlby Bits - July 2023



Hours: Monday—Thursday: 9am – 6pm

Friday & Saturday: 9am – 3pm

SUMMER READING:

Baby Lap Sit – ages 6 weeks to 18 months Tuesdays at 11:30am

Toddlers – ages 18 months to 35 months Tuesdays at 10:30am and 5:00pm

Preschoolers – ages 3-5 years Tuesdays at 1:30pm

Stories Under The Moon – ages 2-6 years Wednesdays at 6pm

Ready For Kindergarten – ages 4-6-years-old Mondays at 10:00am to 1:00pm

Summer Quest! – ages 6-8-years-old Wednesday at 10:00am to 3:00pm

Summer Quest! – ages 9-12-years-old Thursday at 10:00am to 3:00pm

MAHJONG CLUB – Every Wednesday, 1:00 – 4:00PM thru May 31st. A tile-based game that's been played in Asia for over 300 years. Although the game is hard to master, it's easy to learn the basics.

BOWLBY BOOK CLUB – New members are always welcome to join! Held on the first Thursday of the month at 4:30pm.

COSMIC BINGO – Friday, July 28th at 7:00 pm will be a fun night of Glow in the Dark or "COSMIC" Bingo! Sponsored by SeniorLife of Greene County.

CPR/AED TRAINING [AHA] – Saturday, July 22nd 10AM to 2PM CPR Certification classes for Adult, Child, & Infant First Aid, choking, and AED with 2-year certification card and manual. Cost is \$88. RSVP required to Sharon at 724.984.5702 and seating is limited.

FRIENDS SHARING GRIEF – First Monday evening of every month at 5pm. This is a support group for those who are struggling with the loss of an important person in their life.

TECH TUTORING – Every Wednesday morning [11AM – 1PM] and Thursday afternoon [1PM – 3PM] bring your electronic device, charging cords, account passwords, and your library card. First-come, first-served. Always free...just drop in!

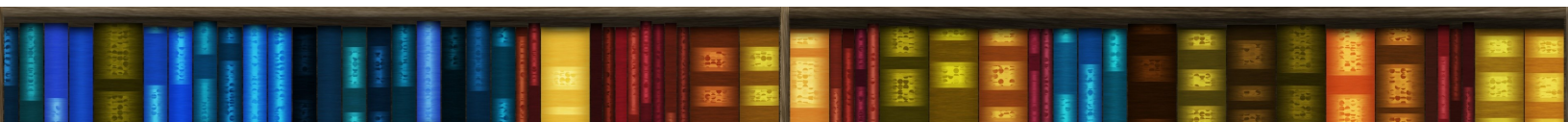
SUMMER MOVIES UNDER THE STARS – Enjoy a movie here at the library Friday, July 14th, beginning promptly at 8:00 P.M. on the Library's Lawn. This Month's Movie is The Super Mario Bros. Movie. FREE snack and beverage! Call the library to RSVP your seat(s).

PUZZLE COMPETITION – Saturday, July 22nd @ 9:30AM – 12:30PM. A max of 10 teams of two to compete in putting together a 500-piece puzzle in three hours or less. Contact the library for more details.

NIFTY KNITTERS – Every 1st & 3rd Thursday of each month from 11:00AM – 1:00PM. Share with like-minded knitters!

T.O.P.S. – Take Off Pounds Sensibly Every Saturday, 10:00AM – 11:00AM.

Call or stop in at Eva K. Bowlby Public Library for more info or to register for any of the above events.
724-627-9776 • 311 N. West St., Waynesburg, PA 15370 • www.evakbowlby.org



2023 dividend declared for the ChamberChoice business insurance program

Program has returned nearly \$12.9 million in dividends over 11 years.

Chambers of Commerce Service Corporation (CCSC) is pleased to announce that Penn National Insurance has declared a 3% dividend for the ChamberChoice Business Insurance program. Members, who placed their insurance coverage with Penn National Insurance during the 2021/2022 program year and remained active chamber members and policyholders through the end of the program year, will receive a dividend check during the month of June. This year's dividend totaled over \$640 thousand. Over the past 11 years, Penn National Insurance has returned an average of 6% in dividends each year, and an aggregate total of \$12.9 million to the business community. The ChamberChoice Business Insurance program is just one of many benefits that CCSC offers its member Chambers. The partnership between Penn National Insurance and CCSC was designed to provide a value-added membership benefit that would help Chambers attract and retain members. An important aspect of this group insurance program is preventing loss and controlling claims costs. Because dividends are based on the group's collective loss experience, a business that may have had a significant loss may still be eligible to receive a dividend. The program is sold exclusively through local, independent agents who can offer chamber members a variety of coverages and pricing on property and casualty insurance, including businessowners, commercial auto, property, general liability, inland marine and workers' compensation. Dividends are paid on all of these coverages. In addition, through safety consulting, Penn National Insurance and local independent insurance agencies encourage member businesses to develop safety practices to substantially reduce or eliminate workplace injuries.



**\$12.9
million**

... that's how much ChamberChoice members earned in dividends by purchasing their business insurance through Penn National Insurance.

Program Features

- ✓ All-lines dividend (excluding umbrella and bonds). Dividend payments are based on total group program premium and claims experience of eligible lines. As program grows, so does dividend potential.
- ✓ Enhanced coverages on auto, businessowners, property, workers compensation, and general liability — giving you added protection at no additional cost.
- ✓ Information and services to help reduce losses — the payoff is greater dividend potential
- ✓ Outstanding, local claim and customer support service

Don't miss out on this opportunity.

Visit your chamber directory or
PennNationalInsurance.com
to find a chamber member agent who
represents Penn National Insurance.



How It Works

Dividend earned is based on the total group premium and claims experience of eligible lines.

For example:

If group premium is:	\$32 million
and group loss ratio is:	32%
Group dividend is:	5%
If member premium is:	\$20,000
Dividend earned will be:	\$1,000

Dividend payments are based upon program eligibility and are not guaranteed.



**PENN NATIONAL
INSURANCE**
Feel Secure®

www.PennNationalInsurance.com

An Equal Employment Opportunity/Affirmative Action Employer
©2023 Penn National Insurance 5.2023

The Recent Trend in Employee Benefits

The latest trend in employee benefits is a shift towards more personalized and flexible offerings that cater to the needs and preferences of individual employees. This trend is being driven by several factors, including the growing importance of work-life balance, the rise of the gig economy, and changing demographics in the workforce.

MYBENEFIT
ADVISOR

One example of this trend is the increasing popularity of "cafeteria-style" benefits plans, which allow employees to choose from a menu of options to create a personalized benefits package. This can include options such as health insurance, retirement plans, and wellness programs, as well as more unconventional benefits such as pet insurance or paid time off for volunteering.

Another trend is the focus on mental health and well-being. Many companies are recognizing the importance of supporting employees' mental health and are offering benefits such as access to counseling services, mindfulness and meditation programs, and flexible work arrangements.

Finally, companies are also recognizing the importance of financial wellness and are offering benefits such as student loan repayment assistance, financial planning services, and access to low-interest loans.

Overall, the latest trend in employee benefits is a move towards more personalized, flexible, and holistic offerings that reflect the changing needs and priorities of today's workforce.

The Greene County Chamber of Commerce offers its members access to My Benefit Advisor as a solution for employee benefits, including voluntary offerings. For more information about My Benefit Advisor, visit our website at greene.mybenefitadvisor.com or contact Mike Galardini at (800) 377-3539.

**SPONSOR AN EBLAST
OR ENEWSLETTER
AND GET YOUR LOGO
PUT AT THE TOP FOR
AN ENTIRE MONTH!**



YOUR LOGO!

HELP US DRIVE BUSINESS TO YOU!

Events are currently up on our website as well!

2023
Calendar of Events Mark your
calendars!

Lunch & Learn—Alternate Business Financing—July 13th @11:30AM —Community Foundation

Membership Directory—July 14th—Deadline for Ad Spot Reservation

Business Connection Luncheon—July 26th @ 11:30AM—Waynesburg University

Observer Reporter Best of the Best— July 21st— Nominations Starts

Women in Business Breakfast—August 4th @7:30AM— Waynesburg University



IN THE NEWS

WASHINGTON HEALTH SYSTEM AND UPMC SIGN LETTER OF INTENT TO PURSUE AFFILIATION

The Boards of Directors of both Washington Health System (WHS) and UPMC (University of Pittsburgh Medical Center) have signed a non-binding letter of intent to negotiate an affiliation agreement between the two entities that would integrate WHS into the UPMC system. The WHS Board of Directors met on June 1, 2023, and unanimously voted to pursue affiliation discussions with UPMC, a clinically integrated and world-renowned nonprofit health care provider and insurer.

“Our primary focus is to ensure the residents of Washington and Greene Counties have local access to high-quality health care that is sustainable into the future,” said Brook Ward, President and CEO of WHS. “After careful consideration and analysis, we believe the best path forward is to affiliate with UPMC to achieve that goal. We currently have numerous clinical arrangements and joint ventures with UPMC, which have provided our patients with exceptional care over the years. From our experience working with UPMC and knowing their track record of providing outstanding patient care, it was an obvious choice to select UPMC as our partner going forward.”

For the past several decades, WHS and UPMC have collaborated in several areas to deliver high-quality, patient-centered care, including:

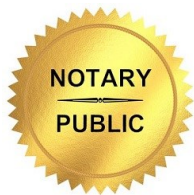
- Our joint partnership in local cancer treatment, a collaboration with UPMC Hillman Cancer Center and based at WHS Washington Hospital. This partnership has brought cutting-edge cancer expertise and treatment to the area while eliminating the inconvenience of traveling for care.
- UPMC Children’s Hospital of Pittsburgh, Express Care clinic and other specialty clinics, also on the campus of WHS Washington Hospital. These have brought specialty pediatric services to the community and have augmented the physicians and advanced practice providers of the Washington Physicians Group in their mission to provide Great Patient Care.
- UPMC’s Heart and Vascular Institute (HVI) provides vascular surgery services throughout the communities WHS serves.
- Onsite neonatal care provided at every birth by UPMC Children's Hospital.
- Senior care services provided at Strabane Trails and Strabane Woods.
- OB ultrasounds interpretation services by UPMC Magee-Womens Hospital.
- And, additional partnerships in telestroke, Chartwell specialty pharmacy services and Clinical Connect HIE electronic records.

WHS Washington Hospital was also one of the original members of the UPMC Health Plan when it was launched 26 years ago. This affiliation with UPMC would help ensure continued high-quality care that patients in the WHS community have come to expect over the past several decades.

In late 2022, the WHS Board of Directors submitted a request for proposals to affiliate with a larger health care provider that could enhance the services and clinical offerings of WHS. The Board’s intent in seeking an affiliation was to keep high-quality health care that is sustainable and locally available not only for today, but for the future generations of Washington and Greene Counties.

“The Board and senior leadership of WHS have realized, that in today's health care environment, we need to consider the long-term stability of our health system to continue to provide the quality health care services our local residents have come to expect. With that goal, we are excited to be able to affiliate with UPMC, a premier integrated health care system, to continue our mission of Great Patient Care,” said Dan Miller, Chairman of WHS Board of Directors.

The signing of the letter of intent means WHS and UPMC have agreed to conditions of affiliation. Over the next several months, both entities will engage in due diligence, research and discussions to work towards a definitive agreement. This affiliation is subject to customary regulatory filings, and WHS and UPMC leaders hope to complete the affiliation as soon as possible. WHS will keep its team members, partners and community members updated as there are developments to share.



Curbside or In-Office Notary!

Notary service is available by appointment. Notary work (excluding title transfers) is free to chamber members as part of your membership benefits.

Email melody@greenechamber.org

or call 724-998-2386

to schedule an appointment.

Place Your Ad Here!

Contact

melody@greenechamber.org

for more information!

First Federal
savings and loan association
of GREENE COUNTY
Serving Greene County Since 1924

Waynesburg Office

25 East High Street

Waynesburg Drive-Thru

Routes 19 & 21

Carmichaels Office

101 West George Street

Mt. Morris Office

101 Locust Avenue Ext.

www.ffgc.bank

Member
FDIC

NMLS#458729



we're open!

OFFICE HOURS

Monday through Thursday
from 10am-4pm

Friday by Appointment



Pathways
Life Long Fulfillment

Every life has potential.
**We're dedicated to
fulfilling it.**

724-229-0851 | yourpathways.org

Want To Volunteer But Don't Know How To Get Started?

RSVP TODAY!

RSVP (Retired & Senior Volunteer Program) of Greene County offers meaningful and rewarding volunteer opportunities for adults ages 55 & over.



**AmeriCorps
Seniors**

Benefits of Volunteering:

- Supplemental Accident Insurance
- Mileage Reimbursements
- Opportunity to Meet New People
- Make a Difference in your Community

RSVP volunteers may serve as:

- Financial Literacy Course Instructor
- Food Bank/Pantries
- Home Delivered Meals Drivers
- Store to Door Grocery Delivery
- Telephone Reassurance
- VITA (Volunteer Income Tax Assistance) Tax Preparer



Now We Are As Close as Your Driveway!
Or Visit Our Showroom at 1000 E. High St., Waynesburg, PA



INTRODUCING
OUR BRAND
NEW MOBILE
SHOWROOM

Carpet • Laminate Floors
Ceramic/Porcelain
Hardwood Flooring
Vinyl/Resilient • Area Rugs
Custom Ceramic Showers
& Backsplashes



724-627-5229
humblecarpet.com

Residential & Commercial
Family Owned & Operated



**MCCRACKEN
PHARMACY**

"Yesterday's Service...Today's Technology"

595 East High Street • Waynesburg, PA

724-627-5454

GOOD HEALTH IS GOOD FOR BUSINESS



**Custom Employee Wellness Programs
designed to fit your business!**

Fitness
Challenges

Group
Exercise
Classes

Health
Screenings

Member
Discounts

And More!

For more information, contact Kayla Brumley,
Member Services Director, at
kcoss@eqtreccenter.org

Now is the
time for **clear**
energy advice.



We take care of your energy, so
you don't have to waste yours.
worldkinect.com



ENHANCING LIVES EXCELLING IN TECHNOLOGY

Accepting New Patients
724-627-5383

Laser-Assisted Cataract Surgery
LASIK • Glaucoma • Retinal Disease
Macular Degeneration • Corneal Disease
Eyelid Surgery • Facial Aesthetics

Surgery Center and Medical
Practice in one convenient location.
750 E Beau St, Washington, PA 15301



**SOUTHWESTERN PENNSYLVANIA
EYE CENTER**

Jennifer Salvitti Davis, M.D.
Sean F. Pieramici, M.D.
236 Elm Drive, Suite 103
Waynesburg, PA 15370



300 Comfort Lane
Waynesburg, PA 15370
Phone: 724.627.0310 | Fax: 724.627.5102

- Free High-Speed Internet Access
- 32" HD Televisions w/HD Programming
- Free Deluxe Continental Breakfast Buffet
- Cozy DreamWell Bedding
- Rooms w/Microwave & Mini-Fridge
- PLUS, Earn Wyndham Rewards Points!

www.microtelinn.com
Lorinda Trovato, General Manager
lorinda.t@millenniumhospitality.com

**Need help
finding a Doctor?**

Call the Physician Referral
Line at: **(724) 250-4310**

or search our Physician Finder at whs.org



We're Closer Than You Think!



featuring **THE HOMESTEAD**
Secure Memory Care Neighborhood

107 Curry Road | Waynesburg, PA 15370

724-627-3153

Rolling Meadows Care, Inc. d/b/a Rolling Meadows Nursing and Rehabilitation, a non-profit organization. We subscribe to a non-discrimination policy.



Community Bank