



# October 2020 CHAMBER CHATTER

*The Official Newsletter of the  
Greene County Chamber of Commerce*

Phone: (724) 627-5926  
Email: [info@greenechamber.org](mailto:info@greenechamber.org)  
[www.greenechamber.org](http://www.greenechamber.org)

**This issue  
brought to you by:**



## OCTOBER IS CHAMBER OF COMMERCE MONTH

The Greene County Chamber of Commerce was recognized this week by the Greene County Commissioners as they proclaimed October, Chamber of Commerce month in Greene County. This coincides with a state-wide proclamation recently issued by the governor.

The proclamation recognizes the chamber's longstanding dedication to serving area businesses since 1901 and excellence in service to the business community during the coronavirus pandemic. The chamber is one of 6 dozen Chambers across the state who were recognized for their efforts by the Pennsylvania Association of Chamber Executives.

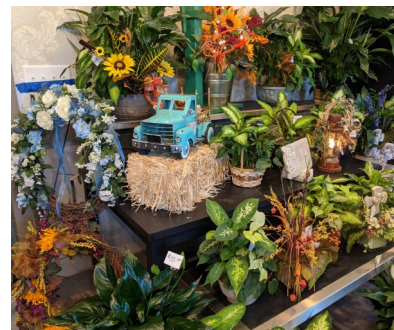
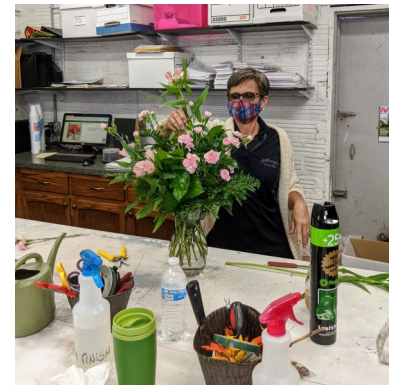


On September 25th, we presented a 140th Anniversary plaque to David and Mike Baily of the Baily Agency. Congratulations on being a pillar of our community for many years!



# Jefferson Florist

On Tuesday, September 22nd, we celebrated with Jefferson Florist during a Ribbon Cutting for their new Waynesburg Location! It was a beautiful day surrounded by beautiful flowers and displays! Stop by and visit Jefferson Florist at their new location, 810 East High Street!





## Local Leader Selected to Serve as Board Member for Statewide Initiative

By Steve Barrett of the Greene County Messenger

A local leader (and chamber board of director member) has been selected to serve as a new member on the board of directors for

Pennsylvania Downtown Center, a nonprofit organization dedicated to enhancing the overall well-being and sustainability of Pennsylvania communities. Jeanine Henry, president of Waynesburg Prosperous & Beautiful's board of directors, joins five other new members appointed as new board members effective July 1.

Henry has been an active leader with WP&B and its Main Street program since 2001. With a background in banking and economic development, she said she is happy to lend both her professional wisdom and volunteer perspective from a rural community to her role on the PDC board.

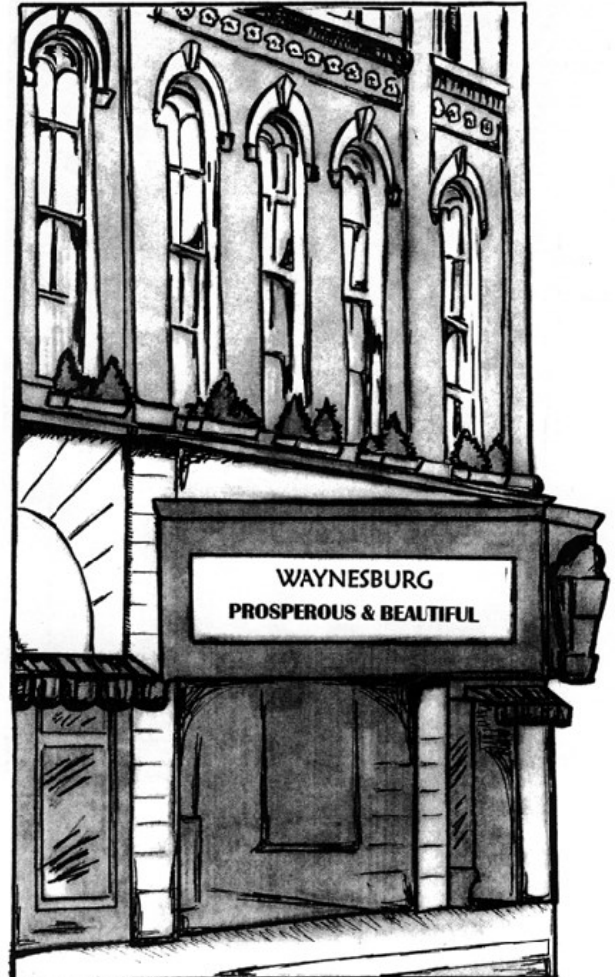
"I am excited and honored to have been asked to serve on the PDC board," Henry said. "Our downtown has seen its share of changes of the last 20-plus years combined with our current pandemic. It is important that we must never lose sight of our local small businesses, as they are the pulse of our community."

Julie Fitzpatrick, PDC executive director, said in a release that PDC is "fortunate to have all of these incredibly talented and dedicated new individuals join the organization, and we look forward to their leadership throughout the next few years."

In July, WP&B was one of 22 state downtown initiatives recognized by PDC for earning national accredited status, which PDC officials state is "the top tier of recognition by Main Street America," the release states.

Fitzpatrick said this designation "signifies a demonstrated commitment to comprehensive community revitalization and a proven track record of successfully applying the Main Street Approach." In the release, Fitzpatrick said the organization is proud to recognize the Pennsylvania communities as part of a national movement of over 860 nationally accredited Main Street America programs.

"These programs exemplify the hard work and dedication of various stakeholders, community leaders, organizational staff, and volunteers who are committed to making their communities better places for us now and in years to come."



# Staff News!

## Administrative Assistant Retires



At the end of September, Eleanor Chapman, the Chamber's Administrative Assistant, officially retired. Eleanor joined the team at the chamber after her retirement as a teacher in the Central Greene School District. She began as a volunteer representing the Waynesburg Lions Club where she is a longstanding member. She was an immediate fit with the team and enjoyed working on our projects so much that when we offered her a two day a week position, she accepted. Her first official event was the 2018 golf outing. During the past few years, she has been an outstanding member of the chamber team managing projects, assisting at events and helping out with many tasks. Since June of this year, she has been the face of the office during our reduced hours. Her diligence, attention to detail and organizational skills have made her a key member of our team and she will be greatly missed by the staff. We wish her the best as she settles back into retirement but with her drive for community service, it most likely will not last long. We thank her for her outstanding service and dedication to the chamber.

## Communications Coordinator Welcomes First Child

Kayla and Kevin Brumley welcomed their first child, a boy they named Bishop Donovan Brumley. He arrived on September 13th, weighed 7lbs, 9 oz and was 20 inches long. Both mother and baby are doing wonderful. Kayla and Kevin are adjusting to their new roles as parents and enjoying every moment. Congratulations!



## Members in the Spotlight



### Cornerstone Care Community Health Centers Recognized as National Quality Leader

Cornerstone Care, Inc. recently received the National Quality Leaders Silver Award from the Health Resources Services and Administration of the United States Department of Health and Human Services. The award recognizes the top 20 percent of federally qualified community health centers nationwide for best overall clinical performance. Cornerstone Care is one of only nine community health centers in Pennsylvania to be so recognized. Cornerstone Care is a member of a national safety network of 1,385 independent Federally Qualified Community Health Center organizations, 43 of which are in Pennsylvania. Pennsylvania Community Health Centers serve over 880,000 patients, or 1 in 14 state residents, annually. Cornerstone Care serves over 21,000 patients annually.

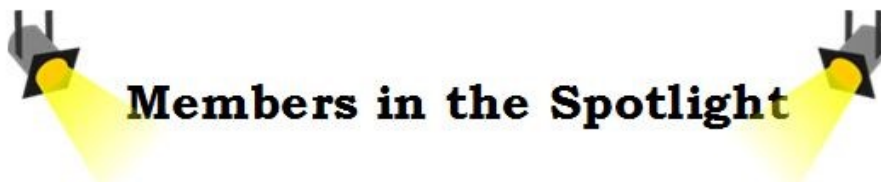
Cornerstone Care also received the Advancing Health Information Technology Quality Award, a recognition of health centers that optimize Health Information Technology for advancing telehealth, patient engagement, interoperability, and collection of social determinants of health to increase access to care and advance quality of care. In addition, Cornerstone Care's Community Health Center of Burgettstown achieved the national Patient Centered Medical Home Certification, which requires meeting a rigorous set of standards and protocols.

As a non-profit organization, Cornerstone Care is governed by a volunteer board of directors, the majority of whose members are patients. Cornerstone Care's mission is to improve the health of its patients and the residents of its communities, with special concern for the underserved. Services include family medical practice, pediatrics, dental services, psychiatry and counseling, vision services including lenses, chiropractic, podiatry, outreach, and insurance enrollment assistance. Visit [www.CornerstoneCare.com](http://www.CornerstoneCare.com) to learn more or call 855-469-6322 to make an appointment at any of our Healthcare Centers in Greene, Washington, Fayette or Allegheny Counties. We are here when you need us!

### New look, new logo for Cornerstone Care

By Steve Barrett of the Greene County Messenger

Cornerstone Care has launched a new corporate look, including a redesigned log and new corporate colors, to coincide with National Community Health Center Week. Cornerstone Care's new look reflects the company's true character, one that embraces change, but is founded on providing the best patient experience possible, and the goal of continual improvement and expansion of services. Cornerstone Care is an independent, non-profit community health center and part of a nationwide network of federally qualified health centers serving over 28 million people. For more information about anything pertaining to Cornerstone Care, visit their new website at [www.CornerstoneCare.com](http://www.CornerstoneCare.com) or call 855-469-6322.



**Members in the Spotlight**

# Rolling Meadows

## NURSING & REHABILITATION

Rolling Meadows is happy to announce that they received the Hazard Grant Pay. These grant funds will be awarded to full-time and part-time employees earning less than \$20/hour, excluding fringe benefits and overtime. The hazard pay will be paid to eligible employees over the 10-week period from August 16, 2020 through October 24, 2020 as a \$3/hour hazard pay increase to their regular pay rate.

Stop in to fill out an application or give them a call to inquire about open positions!



Times have changed and so have we! BeeGraphix has adapted to today's business environment in many ways including new technology, new product offerings and monthly specials for our top-rated products. In addition to those updates our Waynesburg office has gone virtual! Our Virtual Sales Consultant, Carol Howard, is set up at her hive, her home office, and has the full support of the Bee Team at her disposal. With our new technology updates, Carol is able to quote you on the spot from the convenience of her phone or laptop and also help you select the best products possible for your next order. Also, we know it is more important for you to be tending to other things than having to go pick-up orders, so "Free Shipping" on orders over \$250 will now be the new norm for all of our Greene County area customers.

It's time to start thinking about holiday gifts! Spread your holiday cheer with custom printed gear for your employees, clients or customers. Whether it is creating a company gift box or setting up an online gift store, we've got you covered! From designing, to printing, to shipping, trust BeeGraphix to get the job done for you.

For more information on our Holiday Gift Boxes, Online or to place an order, please contact Carol Howard at 724-936-1034 or [Carol@BeeGraphix.com](mailto:Carol@BeeGraphix.com).



A proud partner of the AmericanJobCenter® network

PA CareerLink® Greene County is sponsoring the 2020 Greene County Virtual Career & Job Fair. This will be their first event of this type and they are very excited about it.

2020 Career & Job Fair will take place during the first week of December and is FREE. They will be utilizing the PA CareerLink® Greene County Facebook page to host this event. They are asking participating vendors to submit a brief video to promote their business and/or a business profile for posting on their Facebook page during the event. There is an example on their Facebook page posted September 3rd for Greene County PennDOT.

Their goal is to offer significant representation of employers from various industries, government, non-profit, health, human service organizations, and education to our residents.

Prior to the event, your job vacancies will be posted on the PA CareerLink® website with our Business Service Team assistance. Your job posting(s) will be featured during the event for job seekers to review and reference. Following the event, you will be able to utilize the PA CareerLink® as a location for on-site interviews.

Any questions contact us at 724-852-2900 or email [PACLGreene@washingtongreene.org](mailto:PACLGreene@washingtongreene.org)

**Greene**  **POSITIVE**

*Halloween*  
**BLOOD DRIVE**

SPONSORED BY

  
**HAUNTED HILLS ESTATE**  
A CHILLINGLY FUN EXPERIENCE

  
**DR**  
DIRECT RESULTS

  
**Rotary**  
Club of Waynesburg

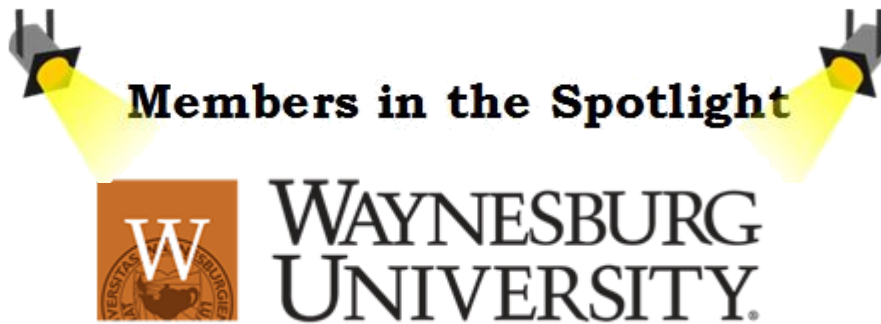
  
**GreeneScene**  
COMMUNITY MAGAZINE

  
**vitalant**

Waynesburg Hampton Inn  
227 Greene Plaza  
Waynesburg, PA 15370

Thursday, October 22, 2020  
12-6 pm

Everyone who donates will receive a FREE Ticket to Haunted Hills Estate, valid for any night of their regular 2020 Operating Season. Plus, take some photos with a few delightful ghouls who are just "dying" to meet you!



## **Waynesburg University named a Top 5 Best Value School**

Waynesburg University continues to be a Best Value School, ranked among the top five best values of both private and public universities in the northern United States by U.S. News & World Report in their 2021 rankings.

Ranked No. 4 on U.S. News & World Report's Best Value Regional Universities North list, Waynesburg ranked above all other regional universities in Pennsylvania for value. The University qualified as a 2021 Best Value School in recognition of its high quality academic programs combined with low costs. The University climbed to No. 4 from its previous ranking of No. 6 on the 2020 list.

Released today, U.S. News & World Report's 2021 Best Value Schools Ranking examined the following four variables: ratio of quality to price; need-based aid; percent of need-based aid recipients awarded scholarships or grants; and the percentage of a school's total costs for 2019-20 covered by the average need-based scholarships or grants to undergraduates.

Earlier this month, Waynesburg University was named to MONEY Magazine's 2020 "Best Colleges For Your Money" list, which examined three primary factors, including quality of education, affordability and outcomes, for the fifth consecutive year.

Waynesburg University's tuition, room and board is more than \$11,000 below the national average for a private, non-profit, four-year college, and the student loan default rate of 4.6% is far lower than the national average of 10.1%.

The University was also named a 2020-2021 College of Distinction for a commitment to the implementation of High-Impact Educational Practices across the distinctions of Engaged Students, Great Teaching, Vibrant Community and Successful Outcomes earlier this summer. Waynesburg's business, education and nursing fields of study received specialized recognition by Colleges of Distinction.

For more information on Waynesburg University's recent rankings, visit [Waynesburg.edu/value](https://Waynesburg.edu/value).

Founded in 1849 by the Cumberland Presbyterian Church, Waynesburg University is located on a traditional campus in the hills of southwestern Pennsylvania, with an additional site for graduate and professional studies in Southpointe. The University is one of only 22 Bonner Scholar schools in the country, offering local, regional and international opportunities to touch the lives of others through service.



**LPL Financial:**

**Cole Chiappialle, CRPC**

Mr. Cole Chiappialle  
1644 East High Street,  
Waynesburg, Pa 15370  
724-683-8733 office  
724-630-1913 cell  
cole.chiappialle@lpl.com  
Financial Services

# Welcome New Members!



**Edward Jones Financial:**

**Matt Baculik,  
Financial Advisor**

3157 Mt. Morris Road,  
Suite 104  
Waynesburg, Pa 15370  
Office: 724-627-0639  
Cell: 412-298-0587  
matt@baculik.com  
www.edwardjones.com  
Financial Services



54A Lebanon Ave • Uniontown, Pa 15401

**Pento Homecare Agency, Inc.**

Jesse R. Pento, CEO/Owner  
54 A Lebanon Avenue,  
Uniontown, Pa 15401  
724-322-1683  
Fax: 724-437-2629  
pentohomecareagency@hotmail.com  
www.pentohomecareagency.com  
Homecare Agency



**Junior Achievement  
of Western PA**

Mr. Ed Chess, Jr.,  
District Manager  
90 Emerson Lane, Suite #1403  
Bridgeville, Pa 15017  
412-208-4747  
Cell: 412-638-2188  
echess@jwesternpa.prg  
www.jwesternpa.org  
Non-Profit—Education



**Lingis Manufacturing, Machine  
& Supply Company**

Mr. Greg Johnston, President  
613 Browns Creek Road,  
Sycamore Pa 15364  
724-627-5639 office  
866-473-1257 fax  
www.lingismfg.com  
lingismfg@windstream.net  
Manufacturing



Friday, October 30<sup>th</sup>

12:00 p.m.

78 W. High Street  
Waynesburg



**LPL Financial**



Friday, October 23<sup>rd</sup>

12:00 p.m.

1644 E. High Street  
Waynesburg



Tuesday, October 27<sup>th</sup>

12:00 p.m.

352 S. Richhill Street  
Waynesburg



## Members on the Move

---

### NexGen Industrial Services

322 Meadow Run Road  
Mt. Morris, Pa 15349  
Phone: 724-324-2140  
Fax: 724-324-9308  
nexgenindustrial.com



## Member Updates

---

### New Representative

Marthinsen & Salvitti  
Joann Howanec - Vice President Personal Lines  
jhowanec@msipa.com  
724-222-8400x222



### New Representative

American Red Cross Greater Pennsylvania Region  
Danielle Reed - Volunteer Recruitment Specialist  
2801 Liberty Avenue  
Pittsburgh, Pa 15222  
412-263-5277 office  
412-266-4639 cell  
[danielle.reed@redcross.org](mailto:danielle.reed@redcross.org)



**American  
Red Cross**

### New Representative

Waynesburg University  
Dave Floyd - Director of Development and Alumni Relations  
724-710-8118  
[dfloyd@waynesburg.edu](mailto:dfloyd@waynesburg.edu)



**WAYNESBURG  
UNIVERSITY**

### Returning Representative

Welcome back to Mark Morgan, Store Manager of  
Sherwin Williams located on High Street in  
Waynesburg



**SHERWIN  
WILLIAMS®**

## 2020 Halloween Spooktacular - Canceled

The planning team from Waynesburg Borough and the Greene County Chamber of Commerce has officially cancelled the 2020 Halloween Spooktacular. The decision was not made lightly, and took into consideration several factors necessary to produce the event this year. Both teams sincerely hope that we can have a wonderful event on Friday, October 29, 2021. Use this time to get creative as we are looking forward to some wonderful costumes next year!



### Roman's Acupuncture and Wellness has you covered!

As we settle in to the new school year and "new normal," Roman's is here to support our community to be as healthy as possible. We also want to support and promote the good in our world, so we're focusing our outreach and social media efforts towards with positive momentum. Be sure to check out our Facebook, Twitter, and LinkedIn pages for videos and opportunities to support local charities.

304-322-0093

[sleeroman@gmail.com](mailto:sleeroman@gmail.com)

[www.romansacupuncture.com](http://www.romansacupuncture.com)

MYBENEFIT  
ADVISOR

### WHAT ARE SPECIALTY DRUGS AND HOW DO THEY IMPACT PREMIUMS?

Specialty drugs are expensive medications that are used to treat complex, chronic medical conditions. They are often given by injection or infusion and are potential life savers for patients undergoing treatment of various cancers, rheumatoid arthritis, multiple sclerosis and other rare diseases. Most of these drugs require special handling, administration and monitoring to assure patient safety and as a result, are not normally stocked by local retail pharmacies, but rather by "specialty pharmacies."

Specialty drug availability has risen dramatically since the mid-1990s, when there were only a few specialty drugs on the market. Today, there are hundreds of specialty drugs available. This rapid increase in specialty drug spending has placed an enormous burden on employers and those they insure, as these higher drug costs have translated into much higher prescription drug premiums. This in turn has created an urgent need for substantial changes to our country's pharmacy and drug therapy management system.

Insurers, pharmacy benefit managers and employers have responded by incorporating specific strategies to control the use and costs of specialty drugs, including pre-certification, the use of tiered formularies, and the required use of lowest cost administration sites. But as specialty drugs continue to account for an increasingly significant portion of overall health care spending, new strategies will be needed to enable patients continued access to these beneficial drugs while controlling their rapid rise in cost.

The Greene County Chamber of Commerce offers its members access to My Benefit Advisor as a solution for employee benefits, including voluntary offerings. For more information about My Benefit Advisor, visit our website at [greene.mybenefitadvisor.com](http://greene.mybenefitadvisor.com) or contact Mike Galardini at (800) 377-3539.



# Introducing the My Benefit Advisor Program

## Expect More from Your Employee Benefits

We are proud to offer members access to the My Benefit Advisor (MBA) program as a solution for employee benefits. The MBA program provides employers with proven expertise and dynamic technology to assist you in the planning, management, and communication of employee benefits. We also help members shop for individual and family health insurance, including exclusive dental and vision coverage from MetLife.

## Our Approach



### Consulting

In-depth understanding of the marketplace, health care reform, and strategies for long-term cost containment lead to a successful, client-focused program.



### Enrollment

Innovative technology and an Implementation Specialist ensure the plan information and value of your benefits are properly communicated to employees.



### Management

A designated Account Manager, equipped with a proactive 12-month service calendar, provides continuous assistance with ongoing administration and optimization of the program.



### Compliance

As health care reform unfolds, our On-Staff Benefits Counsel prepares insightful guidance around employer responsibilities, legislative updates, and potential consequences for non-compliance.



## Employee Communication

User-friendly, interactive technology provides your employees with up-to-date information and builds the foundation of an efficient, cost-effective employee benefits program.



### Call Center

Answers employee questions about their benefits.



### Benefits Guidebook

Clear description of available benefits, accessible electronically.



### Benefits Video

Replicates open enrollment meetings, including links and documents.

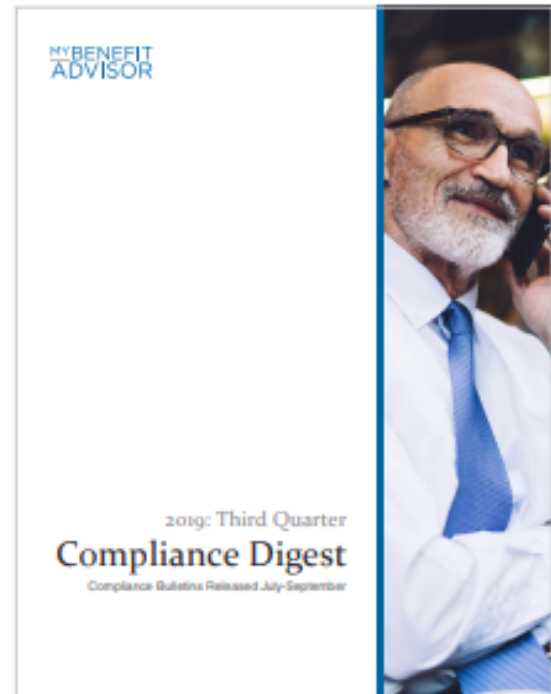


### Online Enrollment

Employees can make plan elections as well as view summaries, rates, and comparisons.

## Compliance Assistance

MBA's On-Staff Benefits Counsel provides insightful guidance on complex topics, simplifying the latest legislation and health care reform with updated bulletins and on-demand videos.



For more information about the MBA program, contact Mike Galardini at (800) 377-3539 or visit [greene.mybenefitadvisor.com](http://greene.mybenefitadvisor.com)



# FREE SPC BUSINESS FINANCE WEBINAR!

Are you a small  
business owner  
looking to expand  
and grow your  
business?

Did your  
business suffer a  
downturn in  
revenue due to  
COVID-19?

If you answered yes to either of these questions, join Steve Meredith, SPC's Business Finance Manager on November 5, 2020 as he presents an overview of SPC's business loan products. Steve's presentation will include an overview of the commission's business expansion loans, as well as loan products designed to assist businesses as they recover from COVID-19

Date: November 5, 2020

Time: 1:00 pm

Webinar link will be provided upon receipt of your RSVP

RSVP by November 3, 2020 to  
Linda Duffy  
[lduffy@spcregion.org](mailto:lduffy@spcregion.org)



# SUPPORT GREENE COUNTY BUSINESSES

# THEY ARE THE



# OF OUR COMMUNITY



*First Federal*  
savings and loan association  
of GREENE COUNTY

**Serving Greene County Since 1924**

Waynesburg Office  
25 East High Street

Carmichaels Office  
101 West George Street

Waynesburg Drive-Thru  
Routes 19 & 21

Mt. Morris Office  
101 Locust Avenue Ext.

**www.firstfederalofgreene.com**

Member  
FDIC

NMLS#458729



**Chapman Insurance Agency**  
Auto.Home.Life.Business.Employee Benefits

**CIA.... We've Got Your Back !**  
Miranda Chapman, Agent

Waynesburg, PA  
724.802.7394 office 724.986.6788 cell  
Miranda@ChapmanInsuranceAgency.net  
chapman-insurance-agency.business.site



Low Force Chiropractic • Physical Therapy  
Massage • Orthotics

**Ph. & Fax 724-852-4222**

1159 6th Street, Waynesburg, PA 15370

**www.CoartChiro.com**

**Dr. Jason Coart**



Dr. Coart of the Pennsylvania Chiropractic and Rehab Center

**RSVP NOW!**  
blueprints

**RSVP Volunteers Serve As:**

- Financial Literacy Course Instructor
- Food Bank/Pantries
- Home Delivered Meals Drivers
- Store to Door Grocery Delivery
- Telephone Reassurance
- Volunteer Income Tax Assistance Preparer

**Benefits of Volunteering:**

- Supplemental Accident Insurance
- Mileage Reimbursements
- Opportunity to Meet New People
- Make a Difference in your Community

For more information about volunteering with RSVP,  
Contact us at 724.802.2883 | 877.614.0788 | myblueprints.org



**BLUEPRINTS SENIORS  
HAVE MORE FUN!**



The Retired and Senior Volunteer Program at Blueprints is hard at work and having a blast doing it!

**Now We Are As Close as Your Driveway!**  
Or Visit Our Showroom at 1000 E. High St., Waynesburg, PA



INTRODUCING  
OUR BRAND  
NEW MOBILE  
SHOWROOM

Carpet • Laminate Floors  
Ceramic/Porcelain  
Hardwood Flooring  
Vinyl/Resilient • Area Rugs  
Custom Ceramic Showers  
& Backsplashes



**724-627-5229**  
**humblecarpet.com**

Residential & Commercial  
Family Owned & Operated



**MCCRACKEN  
PHARMACY**

**"Yesterday's Service...Today's Technology"**

595 East High Street • Waynesburg, PA

**724-627-5454**

**WITH THE NEW SCHOOL SCHEDULE,  
WE ARE HERE TO HELP!**

**GRADES  
K-9**

**E** DUCATION  
**P** HYSICAL ACTIVITY  
**I** NTERACTIVE  
**C** REATIVITY

**EQT  
REC CENTER** RECREATION  
EDUCATION  
COMMUNITY

Greene County Memorial Hospital Foundation  
400 Evergreen Dr. | Waynesburg, PA 15370

**WE OFFER:**  
ACADEMICS AND HOMEWORK HELP  
PHYSICAL EDUCATION  
INSTRUCTIONAL PLAY  
AND MORE!

**NOT ALL ENERGY  
CONSULTANTS  
ARE CREATED  
EQUAL**

**World Kinect**  
Energy Services

**SPEAK TO AN EXPERT!**  
Learn how World Kinect  
Energy Services can better meet  
your fuel and energy goals.

**LOREN MARTELLO**  
lmarcello@worldkinect.com  
412-376-5628

Buy Better. Buy Smarter. world-kinect.com EVERYTHING ENERGY.

**ENHANCING LIVES  
EXCELLING IN TECHNOLOGY**

**Accepting New Patients**  
724-627-5383

Laser-Assisted Cataract Surgery  
LASIK • Glaucoma • Retinal Disease  
Macular Degeneration • Corneal Disease  
Eyelid Surgery • Facial Aesthetics

**Surgery Center and Medical  
Practice in one convenient location.**  
750 E Beau St, Washington, PA 15301

**SOUTHWESTERN PENNSYLVANIA  
EYE CENTER**  
Jennifer Salvitti Davis, M.D.  
Sean F. Pieramici, M.D.  
236 Elm Drive, Suite 103  
Waynesburg, PA 15370

**MICROTEL<sup>®</sup>**  
INN & SUITES  
BY WYNDHAM

300 Comfort Lane  
Waynesburg, PA 15370  
Phone: 724.627.0310 | Fax: 724.627.5102

- Free High-Speed Internet Access
- 32" HD Televisions w/HD Programming
- Free Deluxe Continental Breakfast Buffet
- Cozy DreamWell Bedding
- Rooms w/Microwave & Mini-Fridge
- PLUS, Earn Wyndham Rewards Points!

www.microtelinn.com  
Lorinda Trovato, General Manager  
lorinda.t@millenniumhospitality.com

**Need help  
finding a Doctor?**

Call the Physician Referral  
Line at: **(724) 250-4310**  
or search our Physician Finder at [whs.org](http://whs.org)

**WASHINGTON HEALTH SYSTEM**

**We're Closer Than You Think!**

**Rolling Meadows**  
"Caring • Recovering • Living"

NURSING & REHABILITATION

featuring **THE HOMESTEAD**  
Secure Memory Care Neighborhood

107 Curry Road | Waynesburg, PA 15370  
**724-627-3153**

Rolling Meadows Care, Inc. d/b/a Rolling Meadows Nursing and Rehabilitation, a non-profit organization. We subscribe to a non-discrimination policy.

Like us on [f](https://www.facebook.com/RollingMeadowsNursing.com) RollingMeadowsNursing.com

**Community Bank**  
The Better Business Bank

**Two Convenient Waynesburg Locations to Serve You**

**30 West Greene Street**  
Waynesburg, PA  
724-852-1715

**100 Miller Lane**  
Waynesburg, PA  
724-627-3134

www.communitybank.tv  
888-223-8099

Member **FDIC**