



August 2020

CHAMBER CHATTER

The Official Newsletter of the
Greene County Chamber of Commerce

Phone: (724) 627-5926
Email: info@greenechamber.org
www.greenechamber.org

This issue
brought to you by:



**Lippencott
Alpacas**

2020 ANNUAL GREENE COUNTY CHAMBER OF COMMERCE GOLF OUTING

FRIDAY, AUGUST 14, 2020

GREENE COUNTY COUNTRY CLUB



Thank you to our Event Sponsors!



Sponsorships Still Available!

Corporate Sponsor - \$650: Includes team, one Tee and one Green sponsorships

Awards & Presentation Sponsor - \$700: Includes one Tee and one Green sponsorships

Tee Sponsor - \$100

Green Sponsor - \$100

****See flyer inside for more information and to register!****

August General Membership Zoom Meeting

**"BluePrints in Greene County:
Upcoming Programs & Events"
Presented by Darlene Bigler, CEO,
BluePrints**

Wednesday, August 26, 2020

11:00 am - 12:00 pm

Virtual Event through Zoom

Email melody@greenechamber.org to register

Sponsored by:



Watch & Learn Zoom Webinar "Instagram Strategies"

presented by

Dillon Spencer, Sr. Community
Development Manager, American Cancer
Society

Wednesday, August 19

11:00 a.m. - 12:00 p.m.

RSVP to melody@greenechamber.org

Member Receives Ribbon Cutting Plaque

Last month, new member, Duda's Farm received their plaque that displays the ribbon that was cut during their grand opening of their Waynesburg produce stand located at the Greene County Airport.



Welcome New Member!

Gatrell Business Solutions

Julie Gatrell, Owner

951 4th Avenue

Waynesburg, Pa 15370

Phone: 724-833-3387

Fax: 724-627-7244

julie.gatrell@gatrellbusinesssolutions.com

www.gatrellbusinesssolutions.com

Accountant/Business Consulting

Board of Directors Election

At the July General Membership Networking Zoom Meeting five new Board of Directors members were elected.

Welcome to:

Jenn Ross, Vice President & Community Relationship Officer - Community Bank

Casey Durdines, Local Government & Community Affairs Specialist - EQT

Deneen Rhodes, Tasting Room/Events Coordinator - Thistlethwaite Vineyard

MaChal Forbes, Executive Directory - Greene County United Way

Stacy Stroman, Director - Blueprints

Scam Alert!

Home Town Productions out of Arlington Texas has been in touch with member businesses seeking advertising on a Greene County Map. The caller specifically stated that they were working with the Chamber of Commerce and Tourism office, which they are not.

They also indicated that they will use the Police Station, the Jefferson Post Office and the Washington County Department of Health as distribution centers. The cost of the ads range from \$250 to \$750 and *may* end up on 10,000 maps but we were not able to pin down an actual production number.

Our Chamber office will never endorse a project like this, nor will we ever use an outside company to solicit advertising for any of our publications.

So please, as always, do your homework before placing advertising from outside sources and ask lots of questions. And always call the Chamber so we can investigate for you and share our findings with the local business community.

DEP Funding for Small Businesses

The Pennsylvania Department of Environmental Protection (DEP) announced the availability of \$1 million in grant funding to Pennsylvania small businesses and farmers for energy efficiency, pollution prevention, and natural resource protection projects through the Small Business Advantage grant program. New to the program this year is the opportunity for farmers to install solar pumping systems for their agricultural operations.

Eligible projects include adopting or acquiring equipment or processes that reduce energy use or pollution. Examples of eligible projects are HVAC and boiler upgrades, high-efficiency LED lighting, solvent recovery and waste recycling systems, and auxiliary power units deployed as anti-idling technology for trucks.

Last year, 233 small businesses were awarded grants for their projects. Natural resource protection projects may include planting riparian buffers, installation of streambank fencing to keep livestock out of streams, and investing in agricultural storm water management projects, with the goal of reducing sediment and nutrient loads in our waterways.

Pennsylvania-based small business owners with 100 or fewer full-time equivalent employees are eligible. Projects must save the business a minimum of \$500 and 25 percent annually in energy consumption, or pollution related expenses. Businesses can apply for 50 percent matching funds of up to \$7,000 to adopt or acquire energy-efficient or pollution prevention equipment or processes. Only costs incurred between July 1, 2020, and June 30, 2021, are eligible.

Applications will be considered on a first come, first served basis, and will be accepted until fiscal year 2020-21 funds are exhausted or April 12, 2021, whichever occurs first. All applications must be submitted through the [Commonwealth's Single Application for Assistance](#). Printed, faxed, and mailed applications are not accepted.

The complete grant application package, which includes step-by-step instructions and instructional videos for completing the online application, is available by visiting the [DEP Small Business Advantage Grant](#).

To contact the Small Business Ombudsman's Office, call 717-772-5160 or email epadvantagegrant@pa.gov.

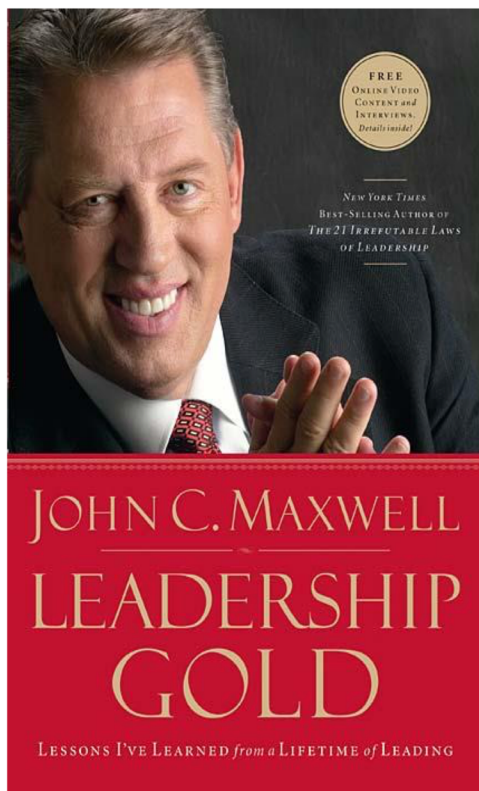
LEADERSHIP GOLD

FEW PEOPLE ARE SUCCESSFUL UNLESS A LOT OF PEOPLE WANT THEM TO BE

We venerate great leaders, and we have the tendency to assume their accomplishments came about regardless of the assistance they received from others. The truth, however, is that no leader would be great without the support and help of teammates. As a leader, you will never get ahead until your people are behind you.

PEOPLE WILL SUMMARIZE YOUR LIFE IN ONE SENTENCE

PICK IT NOW



It's been said that a wise person learns from his mistakes.

A wiser person learns from other's mistakes.

But the wisest person of all learns from other's successes.

Join our Watch & Learn Webinar and review 8 of the 26 gold nuggets of wisdom found in the John C. Maxwell book Leadership Gold.

**Thursday, August 27, 2020
2:00 p.m.**

**To register, email Melody at
melody@greenechamber.org**

COVID-19 Grants for PA Small Businesses

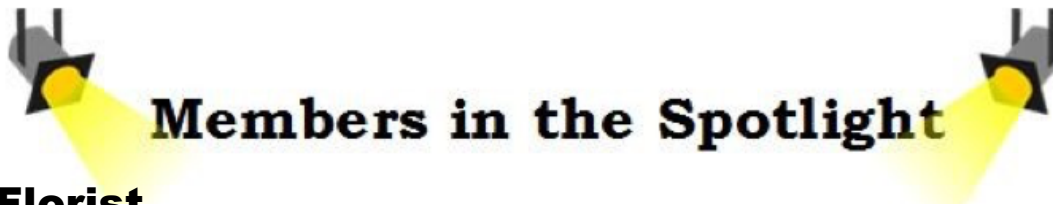
The [COVID-19 Relief Statewide Small Business Assistance Program](#) will open its second application window at 9AM on August 10. This will be the final opportunity to apply for the program. The application window will remain open for 15 business days, closing at 11:59PM on August 28.

Pennsylvania small businesses are encouraged to apply for relief if they:

- Had 25 or fewer full-time employees prior to February 15, 2020
- Have annual revenues of \$1 million or less, and
- Were economically impacted by COVID-19

All applications must be made through a [Community Development Financial Institution](#) (CDFI) in the county where their business is located.

If you already applied during the first application window, you will be notified of your status by August 10. You do not need to reapply in the second round. Qualified applications will be automatically rolled over into this next funding round for consideration.



Jefferson Florist

Jefferson Florist was established by my grandmother, Katheryn Bedosky in 1956. As the matriarch of the family, she married and divorced my grandfather, three times! Soon my grandmother would be known by everyone throughout the community and the flower shop became a great success. She reared three children while working in the flower shop, of course my mother was one of those children.

Sadly, in 2005 my grandmother passed and my mother Johnetta Hardin, stepped straight into her shoes to carry on her mother's legacy. Then in 2015 my mother was diagnosed with cancer. When I heard the news, I immediately dropped everything and returned home to Greene County. I shouldered the daunting task of nurturing my mother through two major surgeries with great uncertainty of the outcome. I began running the flower shop and stayed focused on learning to design flowers. This allowed me to feel close with my grandmother and helped me cope with my mother's recovery.

Today, I'm pleased to report my mom is cancer free. I retired early from my career in Motion Picture of 27 years and we've moved the shop to Waynesburg, Pa where we've received a warm welcome and great success. The new shop is located 810 E. High St and officially opened on March 9, just in time for Easter and

Mother's Day and the Coronavirus. The hours of the shop are 9:00 a.m. to 5:00 p.m. weekdays and 9:00 a.m. to 2:00 p.m. on Saturdays. The shop will also be open for appointments at any time by calling 724-852-1223.

Finally, my name is Tim Hardin and I'm proud to be the next generation to carry on Katheryn's legacy...Jefferson Florist. This is where you'll find me until the next generation steps up to carry on the family tradition. We hope that you join us in celebrating the new Waynesburg location on Tuesday, August 25 with a ribbon cutting celebration!

Join us for a Ribbon Cutting for
Jefferson Florist
Tuesday, August 25
12:00 p.m.
810 East High Street,
Waynesburg

Members in the Spotlight

Waynesburg University hosts in-person commencement ceremonies



**WAYNESBURG
UNIVERSITY**

Waynesburg University honored the Class of 2020 during four in-person commencement ceremonies Saturday, Aug. 1, and Sunday, Aug. 2, on the Lawn of Miller Hall. Two ceremonies were hosted each day in order to comply with state and CDC guidelines for events.

All four ceremonies were also live-streamed, and graduates were given the option to participate virtually if they were unable to attend in person. Virtual participants were honored at the in-person ceremony with their name announced and their photo shown on a large outdoor screen.

Amid signage reminding the limited guests to practice proper social distancing protocols, graduates wearing face coverings greeted each other with joy, many seeing each other for the first time since departing campus in March when classes transitioned to remote modes of instruction.

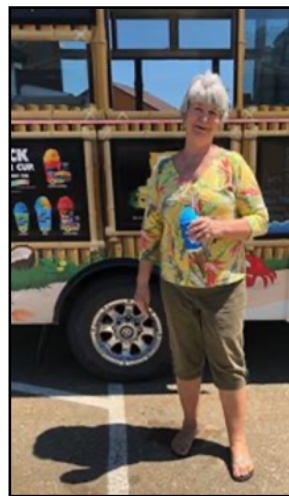
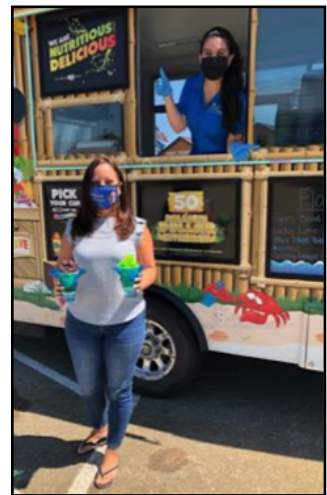
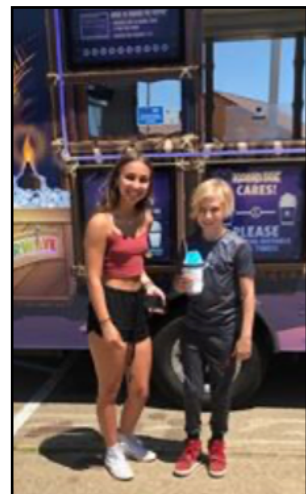
Noelle Hughes, the valedictorian for the Class of 2020, delivered the valedictory to the University and encouraged her classmates to embrace change rather than fear it.

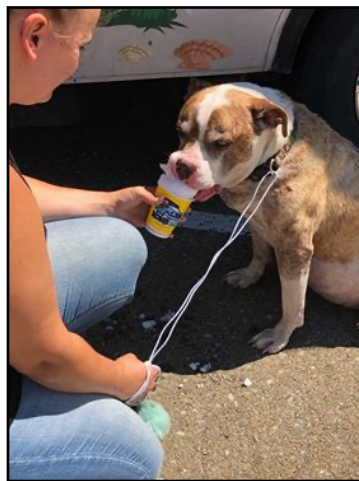
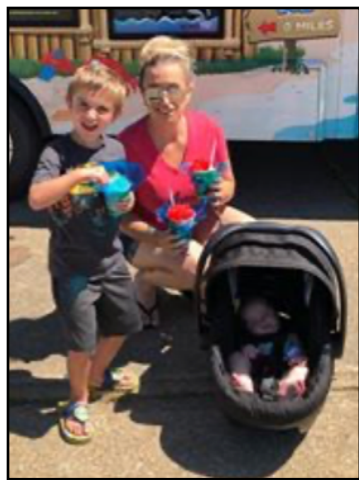
The University awarded the following degrees to the Class of 2020: Doctor of Nursing Practice, Ph.D. in Counselor Education and Supervision, Master of Arts, Master of Arts in Teaching, Master of Business Administration, Master of Education, Master of Science in Athletic Training, Master of Science in Nursing, Bachelor of Arts, Bachelor of Management and Leadership, Bachelor of Science, Bachelor of Science in Business Administration, Bachelor of Science in Marine Biology, and Bachelor of Science in Nursing.

Kona Ice Rain Day Fundraiser

The Chamber held a fundraiser event with the help of Almost Heaven Kona Ice. We welcomed the Greene County community to enjoy a cool treat on Rain Day, July 29th in our parking lot. The day was a great success thanks to the support from our business members and our community!







SUPPORT GREENE COUNTY BUSINESSES

THEY ARE THE



OF OUR COMMUNITY



300 Comfort Lane
Waynesburg, PA 15370
Phone: 724.627.0310 | Fax: 724.627.5102

- Free High-Speed Internet Access
- 32" HD Televisions w/HD Programming
- Free Deluxe Continental Breakfast Buffet
- Cozy DreamWell Bedding
- Rooms w/Microwave & Mini-Fridge
- PLUS, Earn Wyndham Rewards Points!

www.microtelinn.com
Lorinda Trovato, General Manager
lorinda.t@millenniumhospitality.com

Need help finding a Doctor?

Call the Physician Referral
Line at: (724) 250-4310

or search our Physician Finder at whs.org



We're Closer Than You Think!



NURSING & REHABILITATION

featuring **THE HOMESTEAD**
Secure Memory Care Neighborhood

107 Curry Road | Waynesburg, PA 15370

724-627-3153

Rolling Meadows Care, Inc. d/b/a Rolling Meadows Nursing and Rehabilitation, a non-profit organization. We subscribe to a non-discrimination policy.

Like us on RollingMeadowsNursing.com



Community Bank
The Better Business Bank

Two Convenient Waynesburg Locations to Serve You

30 West Greene Street
Waynesburg, PA
724-852-1715

100 Miller Lane
Waynesburg, PA
724-627-3134



www.communitybank.tv
888-223-8099



Serving Greene County Since 1924

Waynesburg Office
25 East High Street

Carmichaels Office
101 West George Street

Waynesburg Drive-Thru
Routes 19 & 21

Mt. Morris Office
101 Locust Avenue Ext.

www.firstfederalofgreene.com



NMLS#458729



Chapman Insurance Agency
Auto.Home.Life.Business.Employee Benefits

CIA.... We've Got Your Back !
Miranda Chapman, Agent

Waynesburg, PA
724.802.7394 office 724.986.6788 cell
Miranda@ChapmanInsuranceAgency.net
chapman-insurance-agency.business.site





Low Force Chiropractic • Physical Therapy
Massage • Orthotics

Ph. & Fax 724-852-4222

1159 6th Street, Waynesburg, PA 15370

www.CoZartChiro.com

Dr. Jason Cozart



Dr. Cozart of the Pennsylvania Chiropractic and Rehab Center

RSVP NOW!



**BLUEPRINTS SENIORS
HAVE MORE FUN!**

RSVP Volunteers Serve As:

- Financial Literacy Course Instructor
- Food Bank/Pantries
- Home Delivered Meals Drivers
- Store to Door Grocery Delivery
- Telephone Reassurance
- Volunteer Income Tax Assistance Preparer

Benefits of Volunteering:

- Supplemental Accident Insurance
- Mileage Reimbursements
- Opportunity to Meet New People
- Make a Difference in your Community

For more information about volunteering with RSVP,
Contact us at 724.852.2893 | 877-814-0788 | myblueprints.org



The Retired and Senior Volunteer Program at Blueprints is hard at work and having a blast doing it!

Now We Are As Close as Your Driveway!
Or Visit Our Showroom at 1000 E. High St., Waynesburg, PA



INTRODUCING
OUR BRAND
NEW MOBILE
SHOWROOM

Carpet • Laminate Floors
Ceramic/Porcelain
Hardwood Flooring
Vinyl/Resilient • Area Rugs
Custom Ceramic Showers
& Backsplashes



724-627-5229
humblecarpet.com

Residential & Commercial
Family Owned & Operated



**MCCRACKEN
PHARMACY**

"Yesterday's Service...Today's Technology"

595 East High Street • Waynesburg, PA

724-627-5454



**EQT REC CENTER
STAR TUMBLERS**

OPEN ENROLLMENT

CONTACT US FOR MORE INFORMATION TODAY!

EQT REC Center | www.eqtreccenter.org | 724.627.2739
400 EverGreene Dr. | Waynesburg, PA 15370

**NOT ALL ENERGY
CONSULTANTS
ARE CREATED
EQUAL**

**World Kinect
Energy Services**

SPEAK TO AN EXPERT!
Learn how World Kinect Energy Services can better meet your fuel and energy goals.

LOREN MARTELLO
lmarcello@world-kinect.com
412-376-3828

Buy Better. Buy Smarter. world-kinect.com EVERYTHING ENERGY.

**ENHANCING LIVES
EXCELLING IN TECHNOLOGY**

Accepting New Patients
724-627-5383

Laser-Assisted Cataract Surgery
LASIK • Glaucoma • Retinal Disease
Macular Degeneration • Corneal Disease
Eyelid Surgery • Facial Aesthetics

Surgery Center and Medical
Practice in one convenient location.
750 E Beau St, Washington, PA 15301



**SOUTHWESTERN PENNSYLVANIA
EYE CENTER**

Jennifer Salvitti Davis, M.D.
Sean F. Pieramici, M.D.
236 Elm Drive, Suite 103
Waynesburg, PA 15370

2020 ANNUAL GREENE COUNTY CHAMBER OF COMMERCE GOLF OUTING

FRIDAY, AUGUST 14, 2020

GREENE COUNTY COUNTRY CLUB



GET IN THE SWING OF THINGS!

8:30 a.m. Shot Gun Start

4-Person Scramble - Team Entry Fee - \$500

Includes 18 Holes of Golf with Carts

TEE-OFF...FOR PRIZES & MORE

1st Place Team - \$400

2nd Place Team - \$200

3rd Place Team - \$100

6 Skill Prizes - \$50 each - 3 for men and 3 for women

\$600 Cash Raffle entry for all players

Team photos for each player

Cash Hole

Prize Hole

50/50 Drawing

Chinese Auction

Putting Contest

Social Distancing will be required to ensure a safe experience for all.

Morning check in and photos will be conducted outside prior to 8:15 a.m.

Boxed breakfast, snacks and lunch will be provided.

All cash prize payouts will be fulfilled by check after the event.

THANK YOU TO OUR EVENT SPONSOR



WASHINGTON HEALTH SYSTEM

Greene

SPONSORSHIPS AVAILABLE

Sponsors receive promotion of your business in the Chamber newsletter, eBlast, Facebook page and the event program. Plus corresponding signage.

Corporate Sponsor - \$650

Team, one Tee and one Green sponsorship.

Awards and Presentation Sponsor - \$700

Includes one Tee and one Green sponsorship.

Skill Prize Sponsor - \$300

Includes a sign on each of the six (6) prize holes

Tee Sponsor - \$100

Green Sponsor - \$100

Prize and Auction Item Donor

TICKET BUNDLES WILL BE SOLD IN ADVANCE

Please pre-pay or bring exact change

\$40 per bundle includes:

3 - 50/50 drawing tickets

15 - Chinese Auction tickets

2 - Mulligans

1 - Cash Hole entry ticket

1 - Prize Hole entry ticket

1 - Putting Contest entry ticket

DON'T PUTTER AROUND

Support the Chamber by participating!

____ Corporate Sponsor - \$650
____ Foursome Registration - \$500
____ Auction Prize Donor

____ Skill Prize Sponsor - \$300
____ Awards Sponsor - \$700
____ Green Sponsor - \$100
____ Tee Sponsor - \$100

Number of Pre-Paid Ticket Bundles at \$40 each _____
(Bundles will be waiting in your cart upon arrival)

Business Name as it is to appear : _____

Players names and email addresses:

1. _____	Email: _____
2. _____	Email: _____
3. _____	Email: _____
4. _____	Email: _____

Check enclosed _____

Please send an invoice _____

To make payment by credit card, please call 724-627-5926

Please make checks payable to:

Greene County Chamber of Commerce

3157 Mount Morris Road, #103, Waynesburg, Pa 15370

melody@greenechamber.org

All players must submit a valid email address prior to the event so that signed waivers may be obtained and instructions for the morning provided prior to the day of the event.



ADVOCATING FOR YOU



HOW THE GREENE COUNTY CHAMBER IS
SUPPORTING OUR BUSINESS COMMUNITY
THROUGH THE PANDEMIC

IS A SOURCE FOR ASSISTANCE

Provides vetted information regarding state and federal funding opportunities to help businesses who faces closures, layoffs, and restructuring as a result of the pandemic. The Chamber participates on the the Greene County COVID-19 Response Task Force alongside of nearly 20 county departments and local organizations to represent the business community.

CREATED A CAMPAIGN

The Chamber created a marketing campaign titled “Re-Invent Greene” which focuses on ways local businesses can reinvent themselves in order to remain open and provide services. The project features a green ribbon signifying that our members are open for business.

PROVIDES RESOURCES

In March, the Chamber immediately created a new page on our website to host all COVID-19 resources and materials. The page is updated frequently as new information becomes available. A new county-wide Facebook page was created to share business updates on hours of operation, changes, and specials for any business in the county that wants to participate.

DAILY, WEEKLY, MONTHLY

Starting in March, the Chamber has sent out updates multiple times a day as warranted, providing up to the minute information, materials, and resources to assist businesses during the pandemic. Weekly eBlasts and eNewsletters carries information to assist members as well.

www.greenechamber.org | 724-627-5926 | info@greenechamber.org |

Facebook: @greenecountypachamber & @GreeneCountyChamberBusinessUpdates

IT'S TIME YOUR BUSINESS HAS THAT **"LIGHTBULB"** MOMENT.

PUT YOUR ENERGY NEEDS
AND GOALS IN THE HANDS
OF OUR SPECIALISTS.



SPEAK TO AN EXPERT!

Learn how World Kinect Energy Services can
better meet your fuel and energy goals.

LOREN MARTELLO
lmartello@world-kinect.com
412-376-3828



Buy Better. Buy Smarter.

world-kinect.com

EVERYTHING ENERGY.

Health Insurance for Employers & Individuals

Greene County Chamber of Commerce offers members access to the ChamberChoice My Benefit Advisor (MBA) program as a solution for employee benefits. The MBA program provides employers with proven expertise and dynamic technology to assist you in the planning, management, and communication of employee benefits. We also help members shop for individual and family health insurance, including exclusive dental and vision coverage from MetLife.

What does MBA do?

For Business Members:

The MBA program offers employers consulting and management expertise for benefits as well as health care reform guidance and engaging employee communication tools.

For Individual Members:

The MBA program's licensed representatives guide you through quoting, comparing, and enrolling in individual and family medical coverage.

Where Is MBA Available?

For Business Members:

The MBA program is available to employers in Pennsylvania, New Jersey, and New York.

For Individual Members:

The MBA program can assist individuals throughout the United States.

How To Get Started

For Business Members:

To speak to an expert about ChamberChoice's MBA, contact Jim Pitts at 610-537-1377 or email him at jim.pitts@mybenefitadvisor.com.
jim.pitts@usiaffinity.com

For Individual Members:

Visit our online marketplace to browse plans and get a quote through an easy-to-use shopping experience at affinity.mybenefitadvisor.com

Top 5 Features: MBA Program

- 1 Expert Consultants**
You will have your own dedicated Account Executive, Account Manager, Implementation Specialist, and Ancillary Advisor.
- 2 In-Depth Needs Analysis & Proven Approach**
Our four-part solution for a successful benefits program includes consulting, management, enrollment, and compliance.
- 3 User-Friendly Technology**
You and your employees will benefit from our call center, paperless administration, and communication tools.
- 4 Exclusive MetLife Products**
You have access to dental, vision, and life insurance plans not available to the public.
- 5 Immediate, Seamless Integration**
Keep your existing IBC, Aetna, Cigna, or UnitedHealthCare plans while adding our services.



To learn more about MBA, contact:

Employers

Jim Pitts

p: 610-537-1377

e: jim.pitts@mybenefitadvisor.com

Individuals

affinity.mybenefitadvisor.com

p: 610-537-1377

e: benefits@mybenefitadvisor.com





Greene County
United Way

18th Annual *Stuff the Bus*



August 10 - 14 from 9:00 am - Noon at Lion's Club Park
To register, dial 2-1-1

This year, more than ever before, families are in need of assistance to get their children ready for the school year - even if they aren't in the classroom. You can help by donating school supplies including: *Backpacks - Binders - Crayons - Glue Sticks, Highlighters - Markers- Notebooks - Pencils - Pens - Pocket Folders - Rulers*

Or visit Greene County United Way's Amazon Wishlist

www.amazon.com/hz/wishlist/ls/207UCP7JLDDTL?ref_=wl_share

Monetary donations are being accepted at

charity.gofundme.com/o/en/campaign/18th-annual-stuff-the-bus

or can be dropped off at Greene County United Way's office at
748 E. High Street, Waynesburg, PA 15370

For more info, Contact MaChal Forbes at 724-852-1009

Put Your Business in the Spotlight

with the **GreeneScene**
COMMUNITY MAGAZINE
A DIRECT RESULTS COMPANY



The GreeneScene previously offered our "Growing in Greene" business articles twice annually. It was the perfect opportunity to advertise your business and tell your story to our approximately 25,000 readers.

Due to popular demand, we decided to offer this special year-round as a part of our new **BUSINESS SPOTLIGHT**. Any business that chooses to purchase an 1/8 page ad or larger in any issue will receive **one complimentary article** (of the same size) about their business during the year. **You choose the month** you'd like your ad and article combination to run. Photos can run with ads/stories that 1/4 page or larger.

If you choose to sign a six or twelve month contract with a 1/2 page or larger ad size, you can **take advantage of this offer twice a year** in any months you choose. Monthly space is limited in the Business Spotlight, so reserve your spot today.

THIS IS A GREAT OPPORTUNITY TO GIVE YOUR BUSINESS A BOOST!



EXCLUSIVE OFFER for CHAMBER MEMBERS

Chamber members receive
**10% off your Business
Spotlight ad and article.**

Your ad and article will be
placed on the Greene
County Chamber of
Commerce website as a
"Member Online Open
House" at no additional cost.



Take advantage of this exclusive offer
available **ONLY** to Greene County
Chamber of Commerce members today!

**LIMITED SPACE
AVAILABLE!**

For more information, contact:

MICHELLE FRYE

ADVERTISING SALES SPECIALIST

cell: 724.833.0538

office: 724.627.2040

michelle@directresults.us

www.GreeneSceneMagazine.com

 @GreeneSceneCommunityMagazine

**COUNTY OF GREENE
DEPARTMENT OF
EMERGENCY SERVICES**



55 West Greene Street • Waynesburg, Pennsylvania 15370
PHONE: 724-627-5387 • EMERGENCY: 724-627-4911 • FAX: 724-627-5342
www.co.greene.pa.us

January 2, 2020

To: All Greene County Businesses

From: Greene County Department of Emergency Services

We are in the process of creating a business contact database that pertains to emergency contact information. We would appreciate it if you would fill out the enclosed form and send this information back to us. Please feel free to add any additional information when needed. Thank you in advance for your time in completing this form. This information will be used in the Greene County EMA Office and 911 Center only.

This information will not be given to the public and will only be used when there is an incident or situation involving your business.

Business Name: _____

Address: _____

Email: _____

Phone Number: _____

Fax Number: _____

Business Owner: _____

After hour Contact (Emergencies Only): Please place in the order in which you would like to be called.

1. _____
2. _____
3. _____
4. _____

If you have an alarm system at your business, please provide the company name and phone number below.

Please return completed form to:

**Greene County Department of Emergency Services
55 West Greene Street
Waynesburg, PA. 15370**

CORNERSTONE OF THE KEYSTONE STATE